

PRODUCT INFORMATION

Target	NCL
Synonyms	Nucleolin
Description	Recombinant rhesus macaque NCL Protein with N-terminal 6×His tag
Delivery	In Stock
Uniprot ID	H9H3Z4
Expression Host	HEK293
Tag	N-6×His Tag
Molecular Characterization	6×His tag NCL(Met1-Glu711)
Molecular Weight	The protein has a predicted molecular mass of 77.6 kDa after removal of the signal peptide.
Purity	The purity of the protein is greater than 85% as determined by SDS-PAGE and Coomassie blue staining.
Formulation & Reconstitution	Lyophilized from sterile PBS, pH 7.4. Normally 5 % - 8% trehalose is added as protectants before lyophilization. Please see Certificate of Analysis for specific instructions of reconstitution.
Storage&Shipping	Store at -20°C to -80°C for 12 months in lyophilized form. After reconstitution, if not intended for use within a month, aliquot and store at -80°C (Avoid repeated freezing and thawing). Lyophilized proteins are shipped at ambient temperature.
Background	Nucleolin (NCL), a eukaryotic nucleolar phosphoprotein, is involved in the synthesis and maturation of ribosomes. It is located mainly in dense fibrillar regions of the nucleolus. Human NCL gene consists of 14 exons with 13 introns and spans approximately 11kb. The intron 11 of the NCL gene encodes a small nucleolar RNA, termed U20. [provided by RefSeq, Jul 2008]
Usage	Research use only
Conjugate	Unconjugated



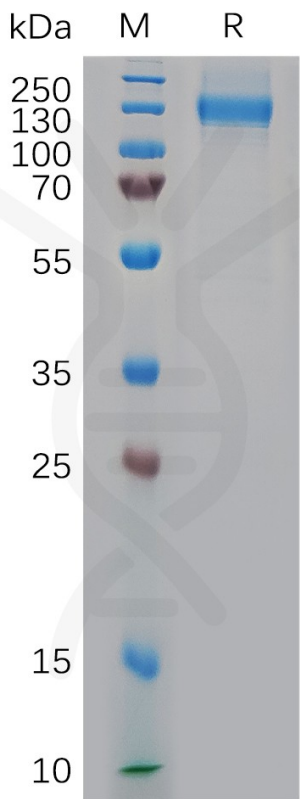


Figure 1. Cynomolgus NCL Protein, His Tag on SDS-PAGE under reducing condition.

