

PRODUCT INFORMATION

|                              |   |
|------------------------------|---|
| Clone ID                     | DMC683  |
| Target                       | TENM4   |
| Synonyms                     | Doc4; ETM5; ODZ4; ten-4; Ten-M4; TEN4; TNM4   |
| Host Species                 | Rabbit  |
| Description                  | PE-conjugated Anti-TENM4 antibody(DMC683); IgG1 Chimeric mAb  |
| Delivery                     | In Stock  |
| Uniprot ID                   | Q6N022  |
| IgG type                     | Rabbit/Human Fc chimeric IgG1   |
| Clonality                    | Monoclonal  |
| Reactivity                   | Human   |
| Applications                 | Flow Cyt  |
| Recommended Dilutions        | Flow Cyt 1:400  |
| Purification                 | Purified from cell culture supernatant by affinity chromatography   |
| Formulation & Reconstitution | Liquid□PBS with 0.05% Proclin300, 1% BSA  |
| Storage&Shipping             | Store at 2°C-8°C for 6 months   |
| Background                   | The protein encoded by this gene plays a role in establishing proper neuronal connectivity during development. Defects in this gene have been associated with hereditary essential tremor-5. [provided by RefSeq; Oct 2016] |
| Usage                        | Research use only   |
| Conjugate                    | PE-conjugated   |
| DIMA Disclaimer              | All DIMA recombinant antibodies are genuinely generated by DIMA Biotech. They are all under patent application. Any protein sequencing or reverse engineering attempt is prohibited. We are actively scr                    |



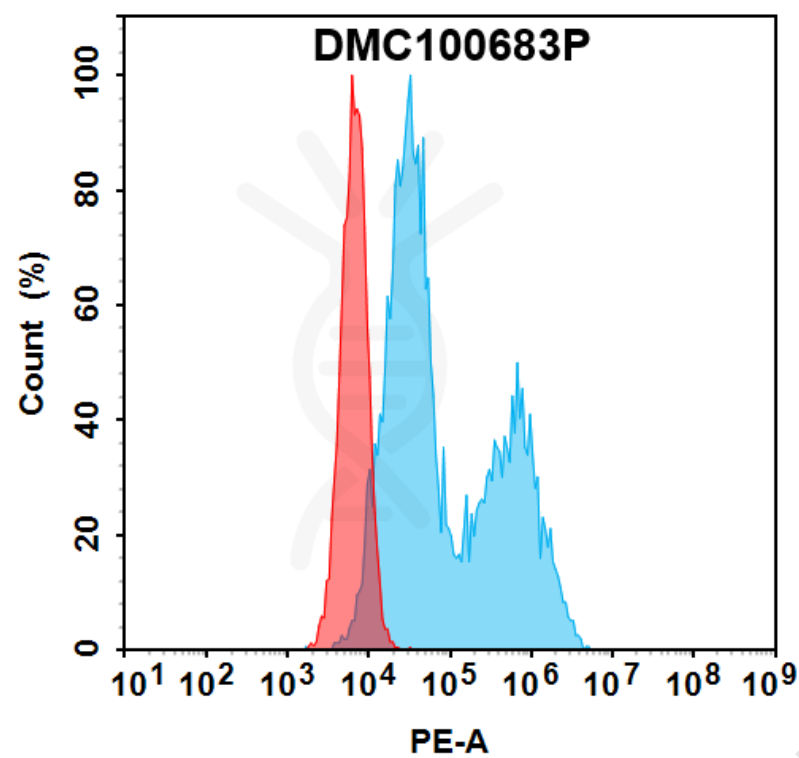


Figure 1. Flow cytometry analysis with 100  $\mu$ l/test (1:400) PE-conjugated Anti-TENM4 antibody(DMC683); IgG1 Chimeric mAb (DMC100683P) on HEK293 cells transfected with human TENM4 (Blue histogram) or HEK293 cells(Red histogram).

