

PRODUCT INFORMATION

Uniprot ID	Q15116
Common Name	ANB-030;ANB030;ANB 030;ANB-30;ANB30;ANB30
Conjugate	PE-conjugated
Synonyms	PD1;PD-1;CD279;SLEB2;hPD-1;hPD-l;hSLE1
Applications	Flow Cyt
Recommended Dilutions	1μl/test
Formulation & Reconstitution	Liquid□PBS with 0.05% Proclin300, 1% BSA
Host Species	N/A
IgG type	IgG1
Reactivity	Human
Target	PD-1
Description	PE-conjugated Anti-PD-1(rosnilimab biosimilar) mAb
Delivery	In Stock
Storage & Shipping	Store at 2°C-8°C for 6 months
Background	Research grade biosimilar. Not for use in therapeutic or diagnostic procedures for humans or animals.
Usage	Research use only
DIMA Disclaimer	All DIMA recombinant antibodies are genuinely generated by DIMA Biotech. They are all under patent application. Any protein sequencing or reverse engineering attempt is prohibited. We are actively scrutinizing all patent application to ensure no IP infringement.



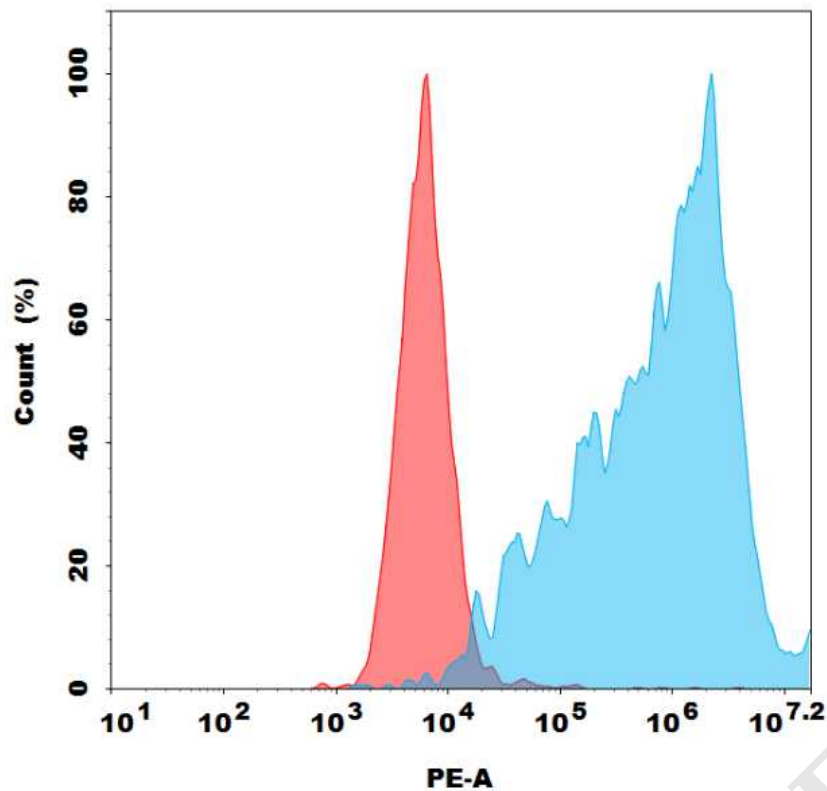


Figure 1. Flow cytometry analysis with 1 μ l/test PE-conjugated Anti-PD-1(rosnilimab biosimilar) mAb on Expi293 cells transfected with Human PD-1 protein (Blue histogram) or Expi293 transfected with irrelevant protein (Red histogram).

