

PRODUCT INFORMATION

| | |
|------------------------------|---|
| Clone ID | DMC488 |
| Target | LIV-1 |
| Synonyms | LIV1, SLC39A6, ZIP-6 |
| Host Species | Rabbit |
| Description | PE-conjugated Anti-LIV-1 antibody(DMC488); IgG1 Chimeric mAb |
| Delivery | In Stock |
| Uniprot ID | Q13433 |
| IgG type | Rabbit/Human Fc chimeric IgG1 |
| Clonality | Monoclonal |
| Reactivity | Human |
| Applications | Flow Cyt |
| Recommended Dilutions | Flow Cyt 1:330 |
| Purification | Purified from cell culture supernatant by affinity chromatography |
| Formulation & Reconstitution | Liquid□PBS with 0.1% Proclin300, 0.18% BSA |
| Storage & Shipping | Store at 2°C-8°C for 6 months |
| Background | Zinc is an essential cofactor for hundreds of enzymes. It is involved in protein, nucleic acid, carbohydrate, and lipid metabolism, as well as in the control of gene transcription, growth, development, and differentiation. SLC39A6 belongs to a subfamily of proteins that show structural characteristics of zinc transporters (Taylor and Nicholson, 2003 [PubMed 12659941]).[supplied by OMIM, Mar 2008] |
| Usage | Research use only |
| Conjugate | PE-conjugated |
| DIMA Disclaimer | All DIMA recombinant antibodies are genuinely generated by DIMA Biotech. They are all under patent application. Any protein sequencing or reverse engineering attempt is prohibited. We are actively scr |



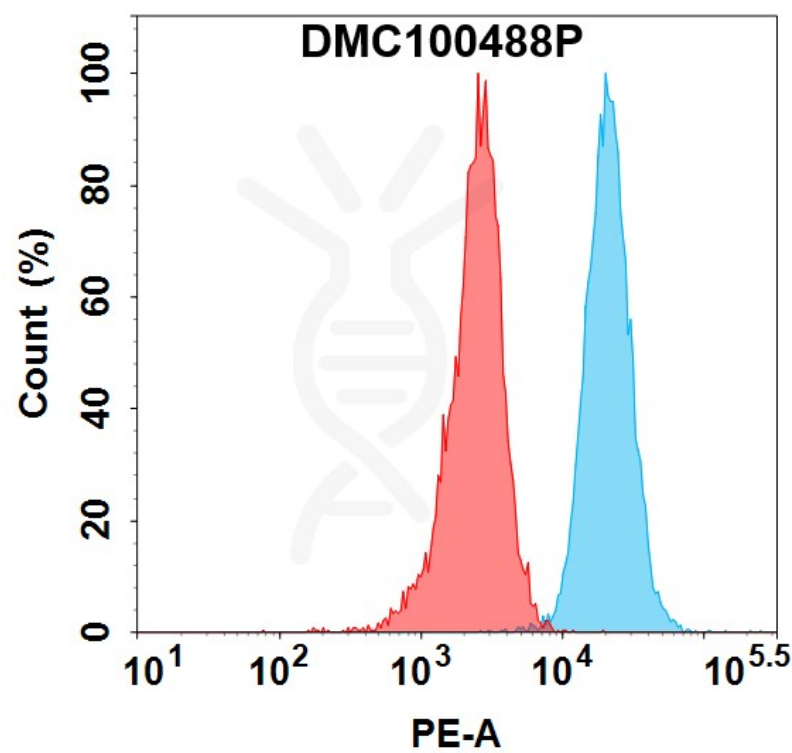


Figure 1. Flow cytometry analysis with 100 μ l/test (1:330) PE-conjugated Anti-LIV-1 antibody(DMC488); IgG1 Chimeric mAb (DMC100488P) (Blue histogram) or isotype control mAb (Red histogram) on Raji cells.

