

PRODUCT INFORMATION

Clone ID	BM1049
Target	G4S linker
Synonyms	GGGS
Host Species	Rabbit
Description	PE-conjugated Anti-(G4S)4 antibody(BM1049), Rabbit mAb
Delivery	In Stock
Uniprot ID	N/A
IgG type	Rabbit IgG
Clonality	Monoclonal
Reactivity	N/A
Applications	Flow Cyt
Recommended Dilutions	Flow Cyt 1μl/test
Purification	Purified from cell culture supernatant by affinity chromatography
Formulation & Reconstitution	Liquid□PBS with,0.18%BSA□0.1%Proclin300
Storage&Shipping	Store at 2°C-8°C for 6 months
Background	The poly-Glycine-Serine (G4S) linker is a type of flexible, unstructured synthetic peptide linker sequence often leveraged to connect antibody fragments (scFvs) and fusion proteins . The linker itself consists of a core pentapeptide sequence, Gly-Gly-Gly-Gly-Ser, that is repeated and commonly found as either a 15-mer (G4S)3 or 20-mer (G4S)4 within scFv-based CARs and scFv fragments. The linker sequence length plays a role in controlling scFv stability and the noncovalent association between the VH and VL domains.Anti-(G4S)4 antibody(BM1049) can binds to linkers with more than one repeat of GGGGS peptide.
Usage	Research use only
Conjugate	PE-conjugated



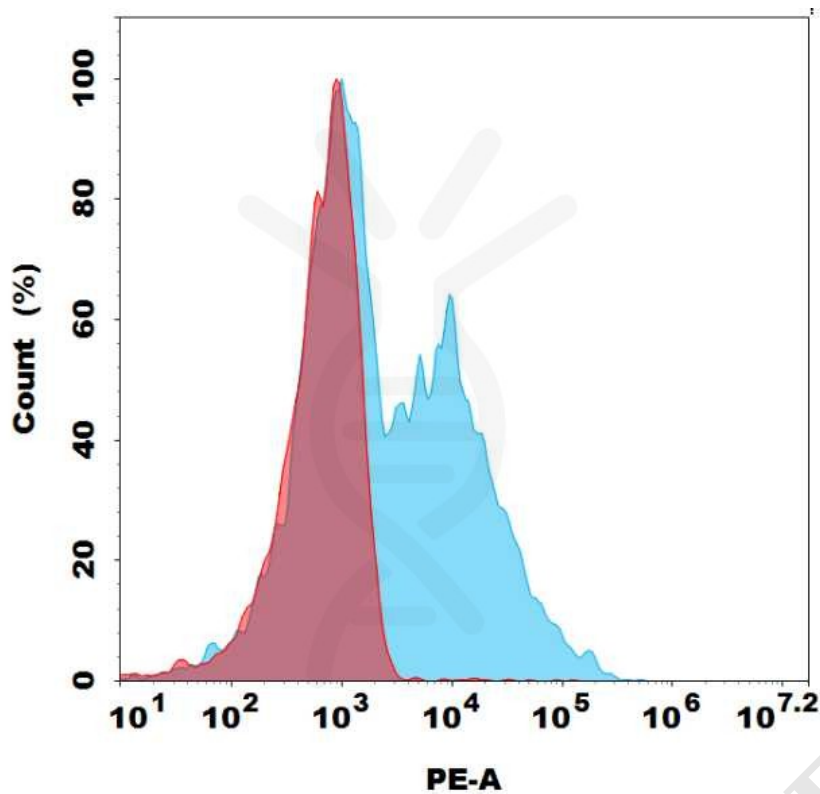


Figure 1. Flow cytometry analysis with 1 μ l/test PE-conjugated Anti-(G4S)4 antibody(BM1049) on CAR-T cells (Blue histogram) or T cells (Red histogram).

