

PRODUCT INFORMATION

Common Name	SC0001-SCX,SC0002,sc0001-SCX
Conjugate	PE-conjugated
Synonyms	SCD01
Applications	Flow Cyt
Recommended Dilutions	Flow Cyt 1:400
Formulation & Reconstitution	Liquid□PBS with 0.05% Proclin300, 1% BSA
Host Species	Humanized
IgG type	Human IgG1 - kappa
Reactivity	Human
Target	DLL3
Uniprot ID	Q9NYJ7
Description	PE-conjugated Anti-DLL3(Rovalpituzumab biosimilar) mAb
Delivery	In Stock
Storage&Shipping	Store at 2°C-8°C for 6 months
Background	Research grade biosimilar. Not for use in therapeutic or diagnostic procedures for humans or animals.
Usage	Research use only



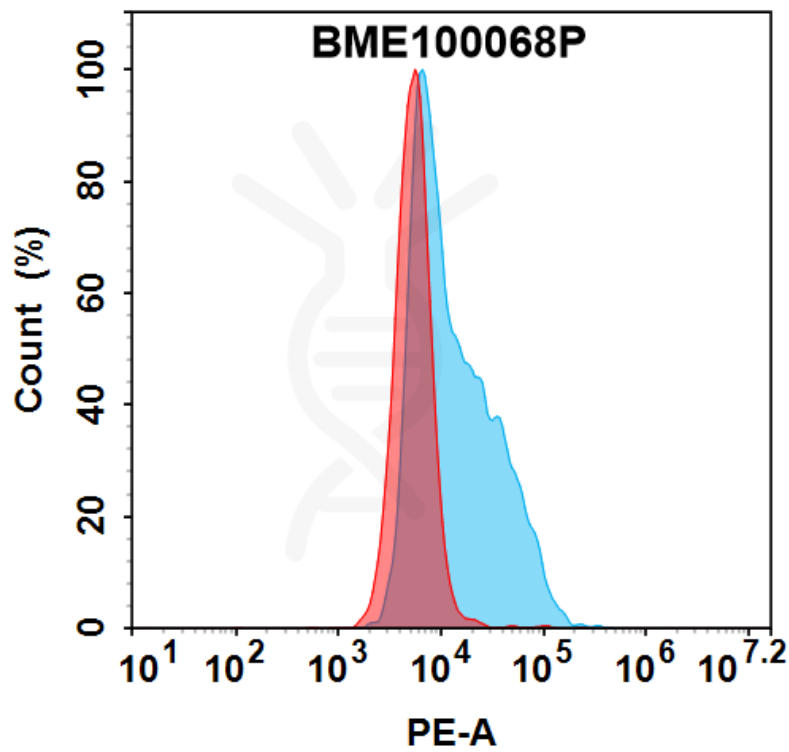


Figure 1. Flow cytometry analysis with 100 μ l/test (1:400) PE-conjugated Anti-DLL3(Rovalpituzumab biosimilar) mAb (BME100068P) on HEK293 cells transfected with human DLL3 (Blue histogram) or HEK293 cells (Red histogram).

DIMABIO CONFIDENTIAL

