

PRODUCT INFORMATION

| | |
|---|---|
| Clone ID | DMC679 |
| Target | CXCR5 |
| Synonyms | Blr1; CXCR5; CXCR-5; GPCR6; MDR15 |
| Host Species | Rabbit |
| Description | PE-conjugated Anti-CXCR5 antibody(DMC679), IgG1 Chimeric mAb |
| Delivery | In Stock |
| Uniprot ID | P32302; A0N0R2; A8K647; Q2YD84 |
| IgG type | Rabbit/Human Fc chimeric IgG1 |
| Clonality | Monoclonal |
| Reactivity | Human |
| Applications | Flow Cyt |
| Recommended Dilutions | Flow Cyt 1µl/test |
| Purification | Purified from cell culture supernatant by affinity chromatography |
| Formulation & Reconstitution | Liquid□PBS with,0.18%BSA□0.1%Proclin300 |
| Storage & Shipping | Store at 2°C-8°C for 6 months |
| Background | Cytokine receptor that binds to B-lymphocyte chemoattractant (BLC). Involved in B-cell migration into B-cell follicles of spleen and Peyer patches but not into those of mesenteric or peripheral lymph nodes.[UniProtKB:Swiss-Prot Function] |
| Usage | Research use only |
| Conjugate | PE-conjugated |
| DIMA Disclaimer | All DIMA recombinant antibodies are genuinely generated by DIMA Biotech. They are all under patent application. Any protein sequencing or reverse engineering attempt is prohibited. We are actively scr |



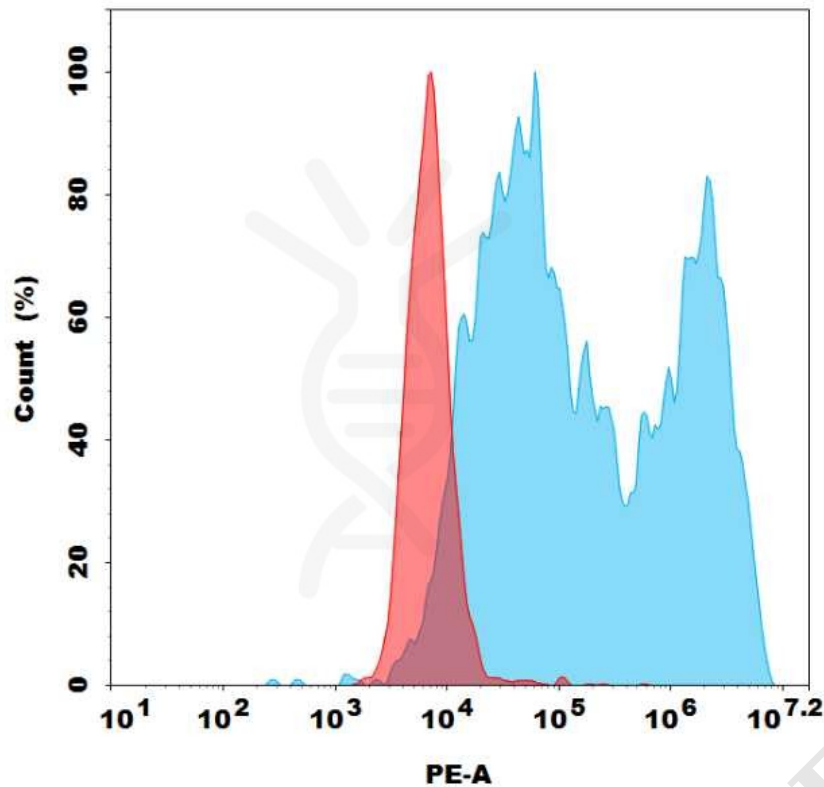


Figure 1. Flow cytometry analysis with 1 μ l/test PE-conjugated Anti-CXCR5 antibody(DMC679) on HEK293 cells transfected with Human CXCR5 protein (Blue histogram) or HEK293 transfected with irrelevant protein (Red histogram).

