

## PRODUCT INFORMATION

<b>Clone ID</b>	DMC468
<b>Target</b>	CLEC1A
<b>Synonyms</b>	CLEC-1; CLEC1
<b>Host Species</b>	Rabbit
<b>Description</b>	PE-conjugated Anti-CLEC1A antibody(DMC468); IgG1 Chimeric mAb
<b>Delivery</b>	In Stock
<b>Uniprot ID</b>	Q8NC01
<b>IgG type</b>	Rabbit/Human Fc chimeric IgG1
<b>Clonality</b>	Monoclonal
<b>Reactivity</b>	Human
<b>Applications</b>	Flow Cyt
<b>Recommended Dilutions</b>	Flow Cyt 1:350
<b>Purification</b>	Purified from cell culture supernatant by affinity chromatography
<b>Formulation &amp; Reconstitution</b>	Liquid□PBS with 0.05% Proclin300, 1% BSA
<b>Storage&amp;Shipping</b>	Store at 2°C-8°C for 6 months
<b>Background</b>	<p>This gene encodes a member of the C-type lectin:C-type lectin-like domain (CTL:CTLD) superfamily. Members of this family share a common protein fold and have diverse functions; such as cell adhesion; cell-cell signaling; glycoprotein turnover; and roles in inflammation and immune response. The encoded protein may play a role in regulating dendritic cell function. This gene is closely linked to other CTL:CTLD superfamily members on chromosome 12p13 in the natural killer gene complex region. Alternative splicing results in multiple transcript variants. [provided by RefSeq; Jul 2014]</p>
<b>Usage</b>	Research use only
<b>Conjugate</b>	PE-conjugated
<b>DIMA Disclaimer</b>	All DIMA recombinant antibodies are genuinely generated by DIMA Biotech. They are all under patent application. Any protein sequencing or reverse engineering attempt is prohibited. We are actively scr



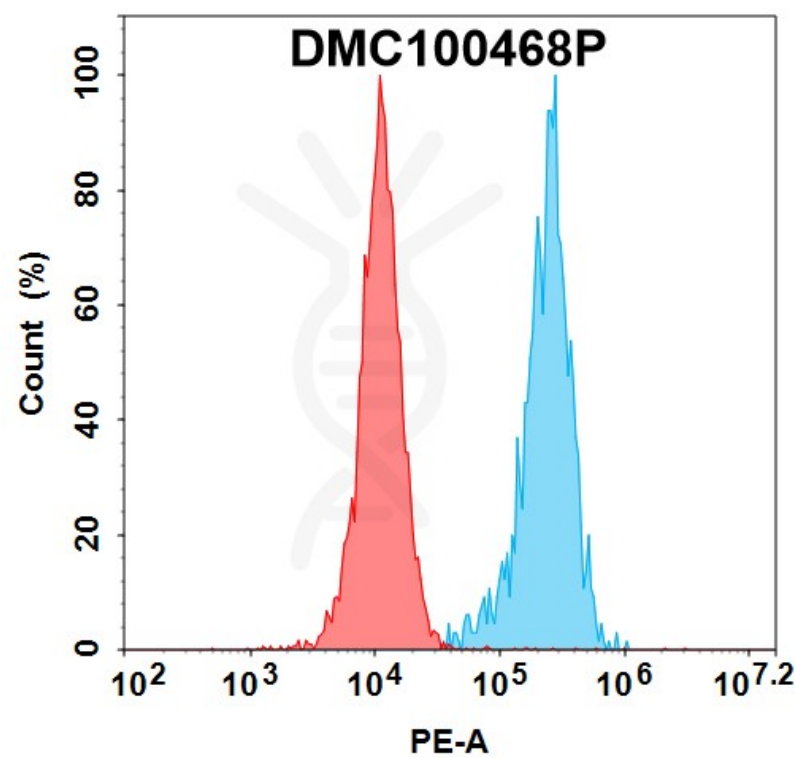


Figure 1. Flow cytometry analysis with 100  $\mu$ l/test (1:350) PE-conjugated PE-conjugated Anti-CLEC1A antibody(DMC468); IgG1 Chimeric mAb (DMC100468P) on HEK293 cells transfected with human CLEC1A (Blue histogram) or HEK293 cells(Red histogram).

