

PRODUCT INFORMATION

Clone ID	DM179
Target	CLDN18.2
Synonyms	Claudin 18.2
Host Species	Rabbit
Description	PE-conjugated Anti-CLDN18.2 antibody(DM179); Rabbit mAb
Delivery	In Stock
Uniprot ID	P56856
IgG type	Rabbit IgG
Clonality	Monoclonal
Reactivity	Human
Applications	Flow Cyt
Recommended Dilutions	Flow Cyt 1:400
Purification	Purified from cell culture supernatant by affinity chromatography
Formulation & Reconstitution	Liquid□PBS with 0.05% Proclin300, 1% BSA
Storage & Shipping	Store at 2°C-8°C for 6 months
Background	CLDN18 belongs to the large claudin family of proteins; which form tight junction strands in epithelial cells.
Usage	Research use only
Conjugate	PE-conjugated
DIMA Disclaimer	All DIMA recombinant antibodies are genuinely generated by DIMA Biotech. They are all under patent application. Any protein sequencing or reverse engineering attempt is prohibited. We are actively scrutinizing all patent application to ensure no IP infringement.



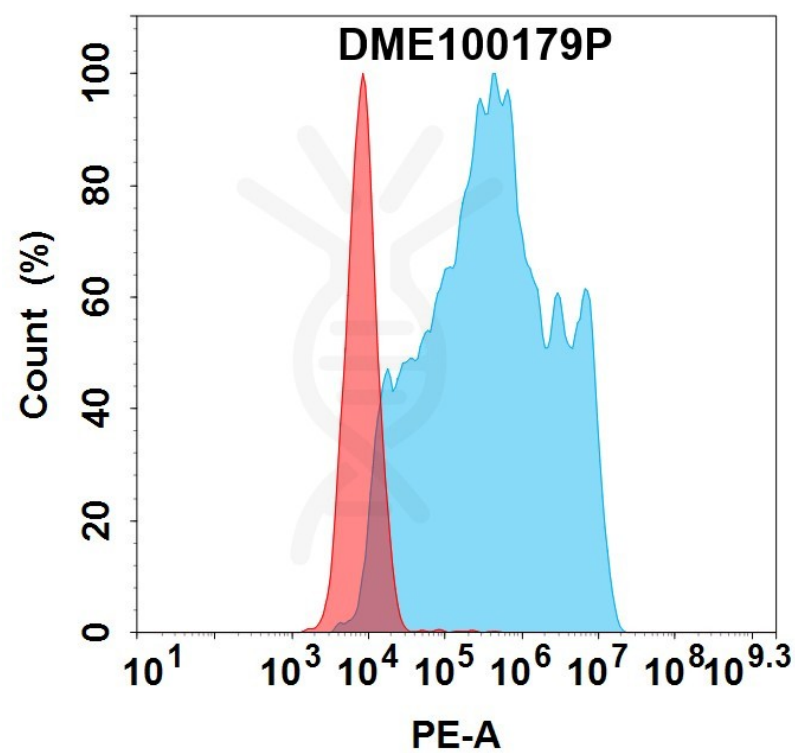


Figure 1. Flow cytometry analysis with 100 µl/test 1:400 PE-conjugated Anti-CLDN18.2 antibody(DM179); Rabbit mAb (DME100179P) on HEK293 cells transfected with human CLDN18.2 (Blue histogram) or HEK293 cells(Red histogram).

