

PRODUCT INFORMATION

Target	PSMA
Synonyms	FOLH1; GCP2; mopsm
Description	Recombinant mouse PSMA protein with N-terminal 10×His tag
Delivery	In Stock
Uniprot ID	O35409
Expression Host	HEK293
Tag	N-10×His tag
Molecular Characterization	10×His tag Mouse PSMA(Lys45-Ala752)
Molecular Weight	The protein has a predicted molecular mass of 80.9 kDa after removal of the signal peptide.
Purity	The purity of the protein is greater than 85% as determined by SDS-PAGE and Coomassie blue staining.
Formulation & Reconstitution	Lyophilized from sterile PBS, pH 7.4. Normally 5 % - 8% trehalose is added as protectants before lyophilization. Please see Certificate of Analysis for specific instructions.
Storage&Shipping	Store at -20°C to -80°C for 12 months in lyophilized form. After reconstitution, if not intended for use within a month, aliquot and store at -80°C (Avoid repeated freezing and thawing). Lyophilized proteins are shipped at ambient temperature.
Background	Enables carboxypeptidase activity and dipeptidase activity. Acts upstream of or within folic acid-containing compound metabolic process and proteolysis. Is integral component of plasma membrane. Is expressed in central nervous system; male reproductive gland or organ; metanephros; and submandibular gland. Orthologous to several human genes including FOLH1 (folate hydrolase 1). [provided by Alliance of Genome Resources, Apr 2022]
Usage	Research use only
Conjugate	Unconjugated



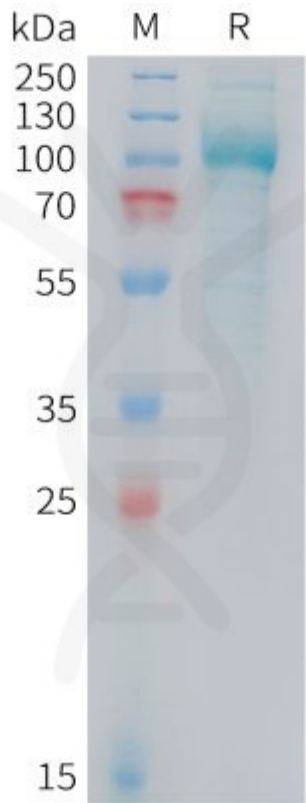


Figure 1. Mouse PSMA Protein, His Tag on SDS-PAGE under reducing condition.

