

PRODUCT INFORMATION

| | |
|------------------------------|---|
| Target | CCR8 |
| Synonyms | CC-CCR-8;CCR-8;CDw198;CKRL1;CMKBR8;CMKBRL2;CY6;GPCRY6;TER1 |
| Description | Recombinant mouse CCR8 protein with C-terminal human Fc tag |
| Delivery | In Stock |
| Uniprot ID | P56484 |
| Expression Host | HEK293 |
| Tag | C-Human Fc Tag |
| Molecular Characterization | Mouse CCR8(Met1-Met33) hFc(Glu99-Ala330) |
| Molecular Weight | The protein has a predicted molecular mass of 30.0 kDa after removal of the signal peptide. The apparent molecular mass of mCCR8-hFc is approximately 35-55 kDa due to glycosylation. |
| Purity | The purity of the protein is greater than 95% as determined by SDS-PAGE and Coomassie blue staining. |
| Formulation & Reconstitution | Lyophilized from sterile PBS, pH 7.4. Normally 5 % – 8% trehalose is added as protectants before lyophilization. Please see Certificate of Analysis for specific instructions of reconstitution. |
| Storage&Shipping | Store at -20°C to -80°C for 12 months in lyophilized form. After reconstitution, if not intended for use within a month, aliquot and store at -80°C (Avoid repeated freezing and thawing). Lyophilized proteins are shipped at ambient temperature. |
| Background | Receptor for the CCL1/SCY1/TCA-3 chemokine.[UniProtKB/Swiss-Prot Function] |
| Usage | Research use only |
| Conjugate | Unconjugated |

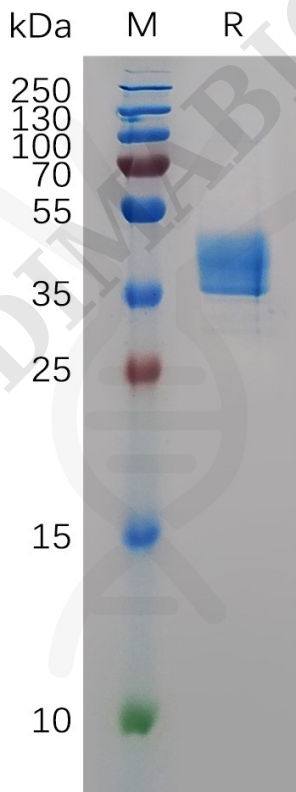


Figure 1. Mouse CCR8 Protein, hFc Tag on SDS-PAGE under reducing condition.
Address: Wuhan Institute of Biotechnology B7, Biolake No.666
Gaoxin Road, Wuhan, Hubei, China
Telephone: +1 2409940618(USA)
/+86-18062749453(China)
/+86-400-006-0995(China)

Email: info@dimabio.com
Website: www.dimabio.com



Mouse CCR8, hFc Tagged protein ELISA

0.2 µg of Mouse CCR8, hFc tagged protein per well

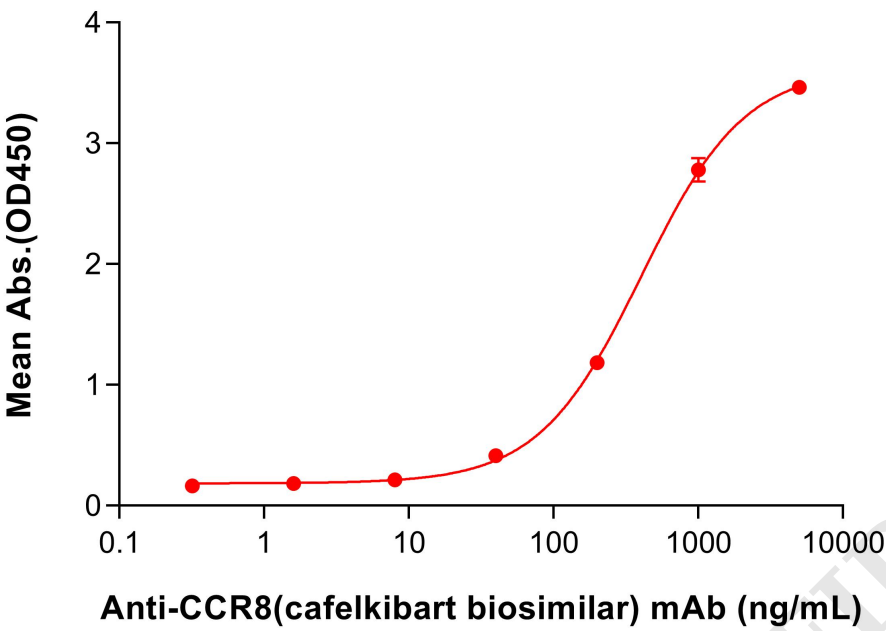


Figure 2. ELISA plate pre-coated by 2 µg/mL (100 µL/well) Mouse CCR8 Protein, hFc Tag (PME-M100034) can bind Anti-CCR8(cafekibart biosimilar) mAb (BME100445) in a linear range of 200–1000 ng/mL.

