

PRODUCT INFORMATION

Target	AXL
Synonyms	Ark;Ufo;Tyro7
Description	Recombinant mouse AXL protein with C-terminal 10×His tag
Delivery	In Stock
Uniprot ID	Q00993
Expression Host	HEK293
Tag	C-10×His Tag
Molecular Characterization	Mouse AXL(Ala19-Pro443) 10×His tag
Molecular Weight	The protein has a predicted molecular mass of 47.8 kDa after removal of the signal peptide. The apparent molecular mass of mAXL-His is approximately 55-70 kDa due to glycosylation.
Purity	The purity of the protein is greater than 85% as determined by SDS-PAGE and Coomassie blue staining.
Formulation & Reconstitution	Lyophilized from sterile PBS, pH 7.4. Normally 5 % - 8% trehalose is added as protectants before lyophilization. Please see Certificate of Analysis for specific instructions of reconstitution.
Storage&Shipping	Store at -20°C to -80°C for 12 months in lyophilized form. After reconstitution, if not intended for use within a month, aliquot and store at -80°C (Avoid repeated freezing and thawing). Lyophilized proteins are shipped at ambient temperature.
Background	Predicted to enable several functions, including phosphatidylinositol 3-kinase binding activity; phosphatidylserine binding activity; and virus receptor activity. Involved in negative regulation of apoptotic process and positive regulation of protein kinase B signaling. Acts upstream of or within several processes, including animal organ development; myeloid cell homeostasis; and negative regulation of tumor necrosis factor production. Predicted to be located in several cellular components, including actin cytoskeleton; cell surface; and host cell surface. Predicted to be part of receptor complex. Predicted to be integral component of plasma membrane. Is expressed in several structures, including alimentary system; brain; genitourinary system; respiratory system; and visual system. Human ortholog(s) of this gene implicated in type 2 diabetes mellitus. Orthologous to human AXL (AXL receptor tyrosine kinase). [provided by Alliance of Genome Resources, Apr 2022]
Usage	Research use only
Conjugate	Unconjugated



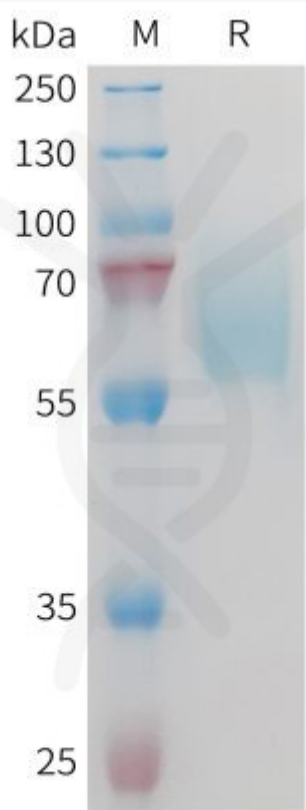


Figure 1. Mouse AXL Protein, His Tag on SDS-PAGE under reducing condition.

