

PRODUCT INFORMATION

Target	PSMA
Synonyms	FGCP;FOLH;GCP2;GCPII;mGCP;NAALAD1;NAALAdase;PSM;PSMA
Description	Recombinant human PSMA protein with N-terminal human Fc tag
Delivery	In Stock
Uniprot ID	Q04609
Expression Host	HEK293
Tag	N-Human Fc Tag
Molecular Characterization	hFc(Glu99-Ala330) PSMA(Lys44-Ala750)
Molecular Weight	The protein has a predicted molecular mass of 105.7 kDa after removal of the signal peptide. The apparent molecular mass of hFc-PSMA is approximately 130 kDa due to glycosylation.
Purity	The purity of the protein is greater than 90% as determined by SDS-PAGE and Coomassie blue staining.
Formulation & Reconstitution	Lyophilized from sterile PBS, pH 7.4. Normally 5 % - 8% trehalose is added as protectants before lyophilization. Please see Certificate of Analysis for specific instructions of reconstitution.
Storage&Shipping	Store at -20°C to -80°C for 12 months in lyophilized form. After reconstitution, if not intended for use within a month, aliquot and store at -80°C (Avoid repeated freezing and thawing). Lyophilized proteins are shipped at ambient temperature.
Background	This gene encodes a type II transmembrane glycoprotein belonging to the M28 peptidase family. The protein acts as a glutamate carboxypeptidase on different alternative substrates, including the nutrient folate and the neuropeptide N-acetyl-L-aspartyl-L-glutamate and is expressed in a number of tissues such as prostate, central and peripheral nervous system and kidney. A mutation in this gene may be associated with impaired intestinal absorption of dietary folates, resulting in low blood folate levels and consequent hyperhomocysteinemia. Expression of this protein in the brain may be involved in a number of pathological conditions associated with glutamate excitotoxicity. In the prostate the protein is up-regulated in cancerous cells and is used as an effective diagnostic and prognostic indicator of prostate cancer. This gene likely arose from a duplication event of a nearby chromosomal region. Alternative splicing gives rise to multiple transcript variants encoding several different isoforms.
Usage	Research use only
Conjugate	Unconjugated



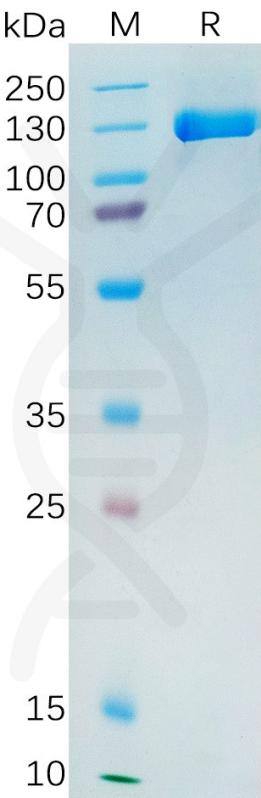


Figure 1. Human PSMA Protein, hFc Tag on SDS-PAGE under reducing condition.

**Human PSMA, hFc Tagged protein ELISA**  
0.2 µg of Human PSMA, hFc tagged protein per well

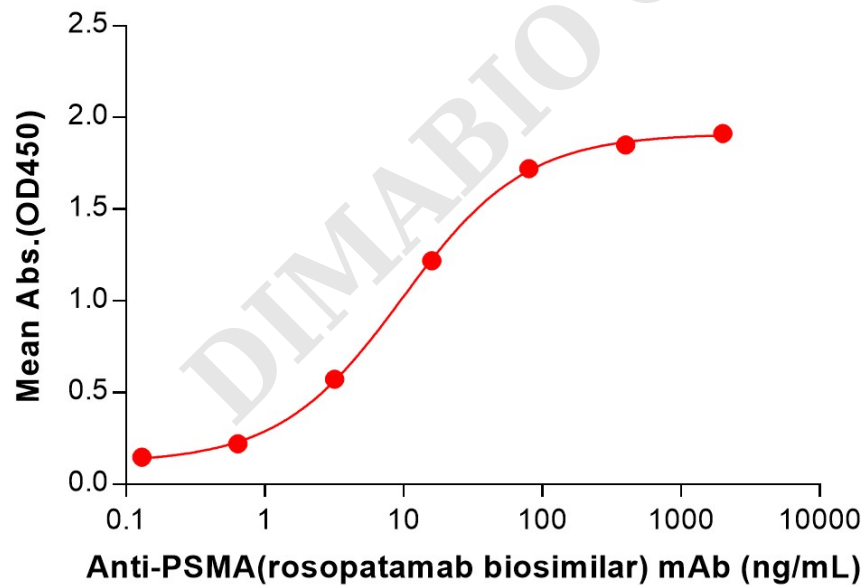


Figure 2. ELISA plate pre-coated by 2 µg/mL (100 µL/well) Human PSMA Protein, hFc Tag (PME100390) can bind Anti-PSMA(rosopatamab biosimilar) mAb (BME100128) in a linear range of 3.20-80 ng/mL.

