

PRODUCT INFORMATION

Target	PRNP
Synonyms	PrP;ASCR;PrP27-30;PrP33-35C;CD230
Description	Recombinant human PRNP(90-230) protein with C-terminal human Fc tag
Delivery	In Stock
Uniprot ID	P04156
Expression Host	HEK293
Tag	C-Human Fc Tag
Molecular Characterization	PRNP(Gly90-Ser230) hFc(Glu99-Ala330)
Molecular Weight	The protein has a predicted molecular mass of 42.2 kDa after removal of the signal peptide. The apparent molecular mass of PRNP(90-230)-hFc is approximately 55-70 kDa due to glycosylation.
Purity	The purity of the protein is greater than 95% as determined by SDS-PAGE and Coomassie blue staining.
Formulation & Reconstitution	Lyophilized from sterile PBS, pH 7.4. Normally 5 % - 8% trehalose is added as protectants before lyophilization. Please see Certificate of Analysis for specific instructions of reconstitution.
Storage & Shipping	Store at -20°C to -80°C for 12 months in lyophilized form. After reconstitution, if not intended for use within a month, aliquot and store at -80°C (Avoid repeated freezing and thawing). Lyophilized proteins are shipped at ambient temperature.
Background	The protein encoded by this gene is a membrane glycosylphosphatidylinositol-anchored glycoprotein that tends to aggregate into rod-like structures. The encoded protein contains a highly unstable region of five tandem octapeptide repeats. This gene is found on chromosome 20, approximately 20 kbp upstream of a gene which encodes a biochemically and structurally similar protein to the one encoded by this gene. Mutations in the repeat region as well as elsewhere in this gene have been associated with Creutzfeldt-Jakob disease, fatal familial insomnia, Gerstmann-Straussler disease, Huntington disease-like 1, and kuru. An overlapping open reading frame has been found for this gene that encodes a smaller, structurally unrelated protein, AltPrp. Alternative splicing results in multiple transcript variants. [provided by RefSeq, Nov 2014]
Usage	Research use only
Conjugate	Unconjugated



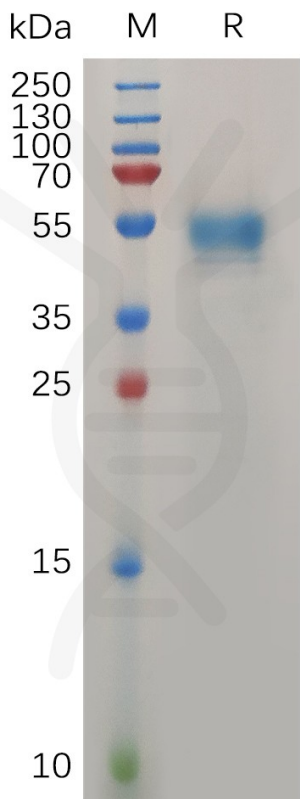


Figure 1. Human PRNP(90-230) Protein, hFc Tag on SDS-PAGE under reducing condition.

