

PRODUCT INFORMATION

| | |
|------------------------------|---|
| Target | PDGFRA |
| Synonyms | CD140A; PDGFR2; PDGFR-2 |
| Description | Recombinant human PDGFRA Protein with C-terminal 6×His tag |
| Delivery | In Stock |
| Uniprot ID | P16234 |
| Expression Host | HEK293 |
| Tag | C-6×His tag |
| Molecular Characterization | PDGFRA(Gln24-Ala528) 6×His tag |
| Molecular Weight | The protein has a predicted molecular mass of 57.4 kDa after removal of the signal peptide. The apparent molecular mass of PDGFRA-His is approximately 100-130 kDa due to glycosylation. |
| Purity | The purity of the protein is greater than 85% as determined by SDS-PAGE and Coomassie blue staining. |
| Formulation & Reconstitution | Lyophilized from sterile PBS, pH 7.4. Normally 5 % - 8% trehalose is added as protectants before lyophilization. Please see Certificate of Analysis for specific instructions. |
| Storage & Shipping | Store at -20°C to -80°C for 12 months in lyophilized form. After reconstitution, if not intended for use within a month, aliquot and store at -80°C (Avoid repeated freezing and thawing). Lyophilized proteins are shipped at ambient temperature. |
| Background | This gene encodes a cell surface tyrosine kinase receptor for members of the platelet-derived growth factor family. These growth factors are mitogens for cells of mesenchymal origin. The identity of the growth factor bound to a receptor monomer determines whether the functional receptor is a homodimer or a heterodimer, composed of both platelet-derived growth factor receptor alpha and beta polypeptides. Studies suggest that this gene plays a role in organ development, wound healing, and tumor progression. Mutations in this gene have been associated with idiopathic hypereosinophilic syndrome, somatic and familial gastrointestinal stromal tumors, and a variety of other cancers. [provided by RefSeq, Mar 2012] |
| Usage | Research use only |
| Conjugate | Unconjugated |



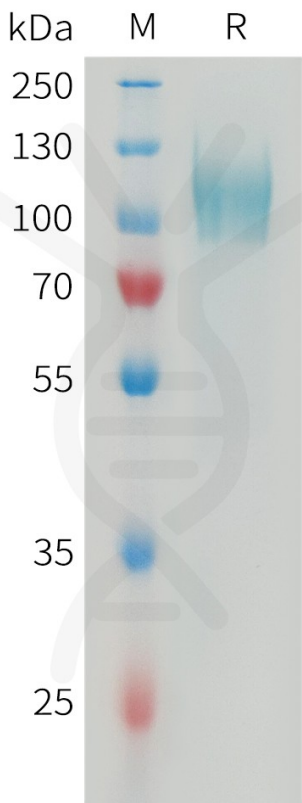


Figure 1. Human PDGFRA Protein, His Tag on SDS-PAGE under reducing condition.

Human PDGFRA, His Tagged protein ELISA
0.2 µg of Human PDGFRA, His tagged protein per well

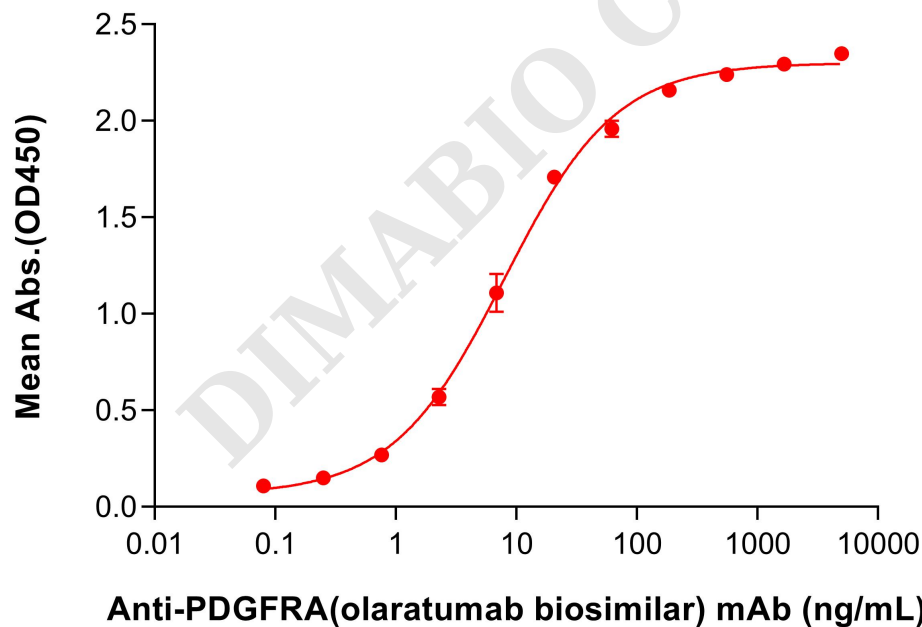


Figure 2. ELISA plate pre-coated by 2 µg/mL (100 µL/well) Human PDGFRA Protein, His Tag (PME101358) can bind Anti-PDGFRA(olaratumab biosimilar) mAb (BME100598) in a linear range of 2.29-61.73 ng/mL.

