

PRODUCT INFORMATION

Target	PD-1
Synonyms	PD1; PDCD1; CD279; SLEB2; hPD-1; hPD-I; hSLE1; A1MTBS
Description	Recombinant human PD-1 Protein with C-terminal human Fc tag
Delivery	In Stock
Uniprot ID	Q15116
Expression Host	HEK293
Tag	C-Human Fc tag
Molecular Characterization	PD-1(Leu25-Thr145) hFc(Glu99-Ala330)
Molecular Weight	The protein has a predicted molecular mass of 39.7 kDa after removal of the signal peptide.
Purity	The purity of the protein is greater than 95% as determined by SDS-PAGE and Coomassie blue staining.
Formulation & Reconstitution	Lyophilized from sterile PBS, pH 7.4. Normally 5 % - 8% trehalose is added as protectants before lyophilization. Please see Certificate of Analysis for specific instructions of reconstitution.
Storage&Shipping	Store at -20°C to -80°C for 12 months in lyophilized form. After reconstitution, if not intended for use within a month, aliquot and store at -80°C (Avoid repeated freezing and thawing). Lyophilized proteins are shipped at ambient temperature.
Background	Programmed cell death protein 1 (PDCD1) is an immune-inhibitory receptor expressed in activated T cells; it is involved in the regulation of T-cell functions, including those of effector CD8+ T cells. In addition, this protein can also promote the differentiation of CD4+ T cells into T regulatory cells. PDCD1 is expressed in many types of tumors including melanomas, and has demonstrated to play a role in anti-tumor immunity. Moreover, this protein has been shown to be involved in safeguarding against autoimmunity, however, it can also contribute to the inhibition of effective anti-tumor and anti-microbial immunity. [provided by RefSeq, Aug 2020]
Usage	Research use only
Conjugate	Unconjugated



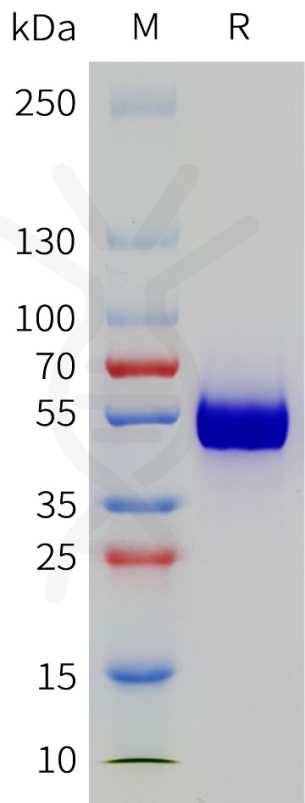


Figure 1. Human PD-1 Protein, hFc Tag on SDS-PAGE under reducing condition.

Human PD1(25-145), hFc Tagged protein ELISA

0.2 μ g of Human PD1(25-145), hFc tagged protein per well

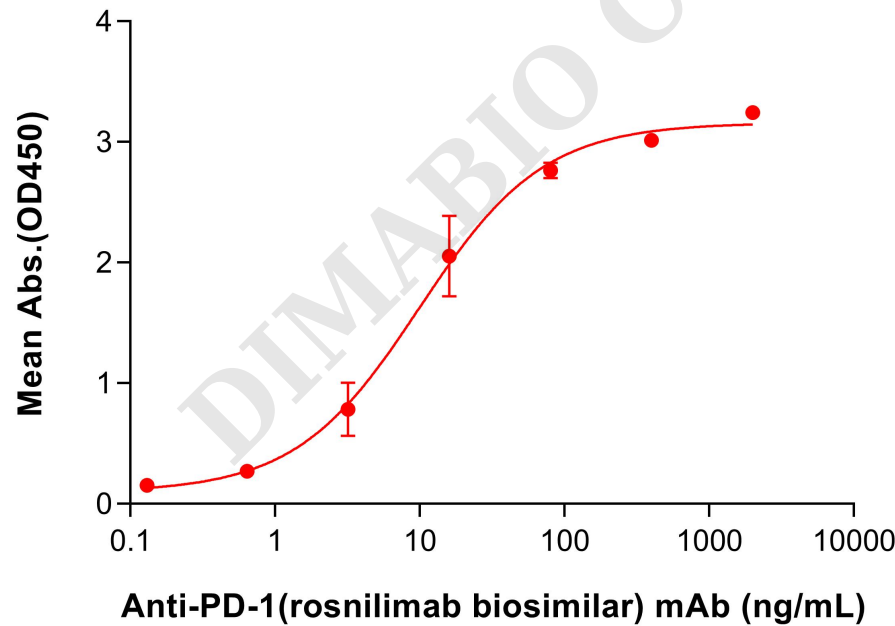


Figure 2. ELISA plate pre-coated by 2 μ g/mL (100 μ L/well) Human PD1(25-145) Protein, hFc Tag (PME101789) can bind Anti-PD-1(rosnilimab biosimilar) mAb (BME100657) in a linear range of 3.2-8 ng/mL.

