

PRODUCT INFORMATION

|                              |  |
|------------------------------|--|
| Target                       | NEFL   |
| Synonyms                     | CMT1F;CMT2E;CMTDIG;NF-L;NF68;NFL;PPP1R110  |
| Description                  | Recombinant Human NEFL with C-terminal human Fc tag  |
| Delivery                     | In Stock   |
| Uniprot ID                   | P07196   |
| Expression Host              | HEK293   |
| Tag                          | C-Human Fc Tag   |
| Molecular Characterization   | NEFL(Ser2-Asp543) hFc(Glu99-Ala330)  |
| Molecular Weight             | The protein has a predicted molecular mass of 87.5 kDa after removal of the signal peptide. The apparent molecular mass of NEFL-hFc is approximately 35-55 kDa due to glycosylation.   |
| Purity                       | The purity of the protein is greater than 95% as determined by SDS-PAGE and Coomassie blue staining.   |
| Formulation & Reconstitution | Lyophilized from sterile PBS, pH 7.4. Normally 5 % - 8% trehalose is added as protectants before lyophilization. Please see Certificate of Analysis for specific instructions of reconstitution.   |
| Storage&Shipping             | Store at -20°C to -80°C for 12 months in lyophilized form. After reconstitution, if not intended for use within a month, aliquot and store at -80°C (Avoid repeated freezing and thawing). Lyophilized proteins are shipped at ambient temperature.  |
| Background                   | Neurofilaments are type IV intermediate filament heteropolymers composed of light, medium, and heavy chains. Neurofilaments comprise the axoskeleton and they functionally maintain the neuronal caliber. They may also play a role in intracellular transport to axons and dendrites. This gene encodes the light chain neurofilament protein. Mutations in this gene cause Charcot-Marie-Tooth disease types 1F (CMT1F) and 2E (CMT2E), disorders of the peripheral nervous system that are characterized by distinct neuropathies. A pseudogene has been identified on chromosome Y. [provided by RefSeq, Oct 2008] |
| Usage                        | Research use only  |
| Conjugate                    | Unconjugated   |



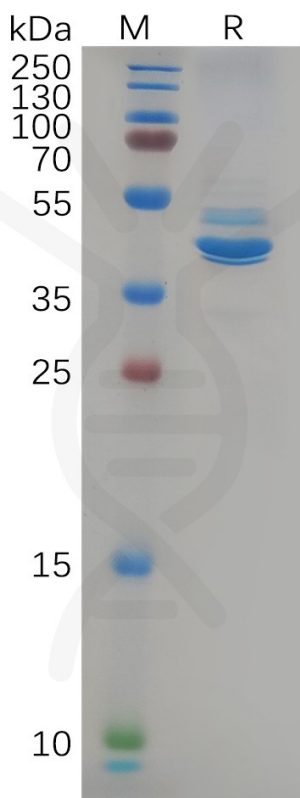


Figure 1. Human NEFL Protein, hFc Tag on SDS-PAGE under reducing condition.

