

PRODUCT INFORMATION

Target	LY6G6D
Synonyms	G6D, NG25, LY6-D, MEGT1, C6orf23
Description	Recombinant human LY6G6D Protein with N-terminal human Fc tag
Delivery	In Stock
Uniprot ID	O95868
Expression Host	HEK293
Tag	N-Human Fc tag
Molecular Characterization	hFc(Glu99-Ala330) LY6G6D(Asn20-Ser104)
Molecular Weight	The protein has a predicted molecular mass of 35.2 kDa after removal of the signal peptide.
Purity	The purity of the protein is greater than 95% as determined by SDS-PAGE and Coomassie blue staining.
Formulation & Reconstitution	Lyophilized from sterile PBS, pH 7.4. Normally 5 % - 8% trehalose is added as protectants before lyophilization. Please see Certificate of Analysis for specific instructions of reconstitution.
Storage&Shipping	Store at -20°C to -80°C for 12 months in lyophilized form. After reconstitution, if not intended for use within a month, aliquot and store at -80°C (Avoid repeated freezing and thawing). Lyophilized proteins are shipped at ambient temperature.
Background	LY6G6D belongs to a cluster of leukocyte antigen-6 (LY6) genes located in the major histocompatibility complex (MHC) class III region on chromosome 6. Members of the LY6 superfamily typically contain 70 to 80 amino acids, including 8 to 10 cysteines. Most LY6 proteins are attached to the cell surface by a glycosylphosphatidylinositol (GPI) anchor that is directly involved in signal transduction (Mallya et al., 2002 [PubMed 12079290]).[supplied by OMIM, Apr 2009]
Usage	Research use only
Conjugate	Unconjugated



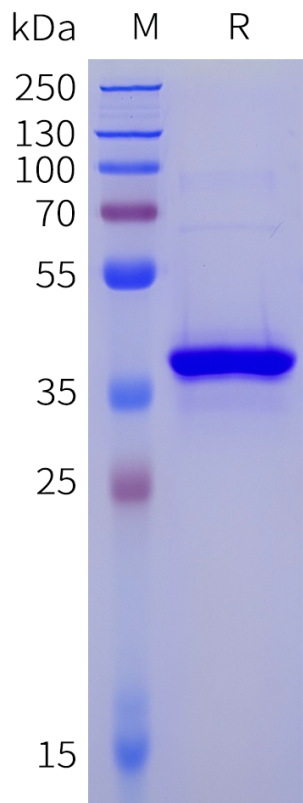


Figure 1. Human LY6G6D Protein, hFc Tag on SDS-PAGE under reducing condition.

