

PRODUCT INFORMATION

Target	LRP6
Synonyms	ADCAD2;STHAG7
Description	Recombinant Human LRP6 Protein with C-terminal 6×His tag
Delivery	In Stock
Uniprot ID	O75581
Expression Host	HEK293
Tag	C-6×His Tag
Molecular Characterization	LRP6(Ala20-Ala1370) 6×His tag
Molecular Weight	The protein has a predicted molecular mass of 153.1 kDa after removal of the signal peptide. The apparent molecular mass of LRP6-His is approximately 130-250 kDa due to glycosylation.
Purity	The purity of the protein is greater than 85% as determined by SDS-PAGE and Coomassie blue staining.
Formulation & Reconstitution	Lyophilized from sterile PBS, pH 7.4. Normally 5% - 8% trehalose is added as protectants before lyophilization. Please see Certificate of Analysis for specific instructions of reconstitution.
Storage & Shipping	Store at -20°C to -80°C for 12 months in lyophilized form. After reconstitution, if not intended for use within a month, aliquot and store at -80°C (Avoid repeated freezing and thawing). Lyophilized proteins are shipped at ambient temperature.
Background	This gene encodes a member of the low density lipoprotein (LDL) receptor gene family. LDL receptors are transmembrane cell surface proteins involved in receptor-mediated endocytosis of lipoprotein and protein ligands. The protein encoded by this gene functions as a receptor or, with Frizzled, a co-receptor for Wnt and thereby transmits the canonical Wnt/beta-catenin signaling cascade. Through its interaction with the Wnt/beta-catenin signaling cascade this gene plays a role in the regulation of cell differentiation, proliferation, and migration and the development of many cancer types. This protein undergoes gamma-secretase dependent RIP- (regulated intramembrane proteolysis) processing but the precise locations of the cleavage sites have not been determined.[provided by RefSeq, Dec 2009]
Usage	Research use only
Conjugate	Unconjugated



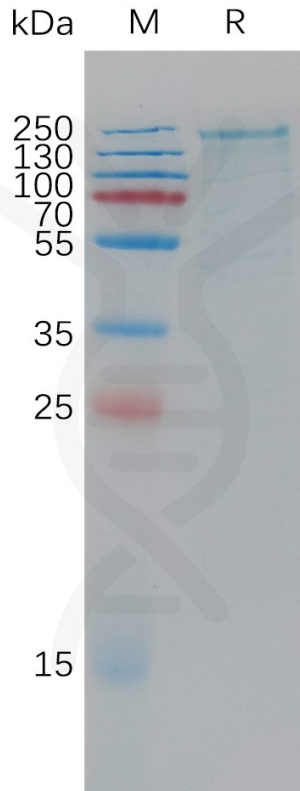


Figure 1. Human LRP6 Protein, His Tag on SDS-PAGE under reducing condition.

Human LRP6, His Tagged protein ELISA

0.2 μ g of Human LRP6, His tagged protein per well

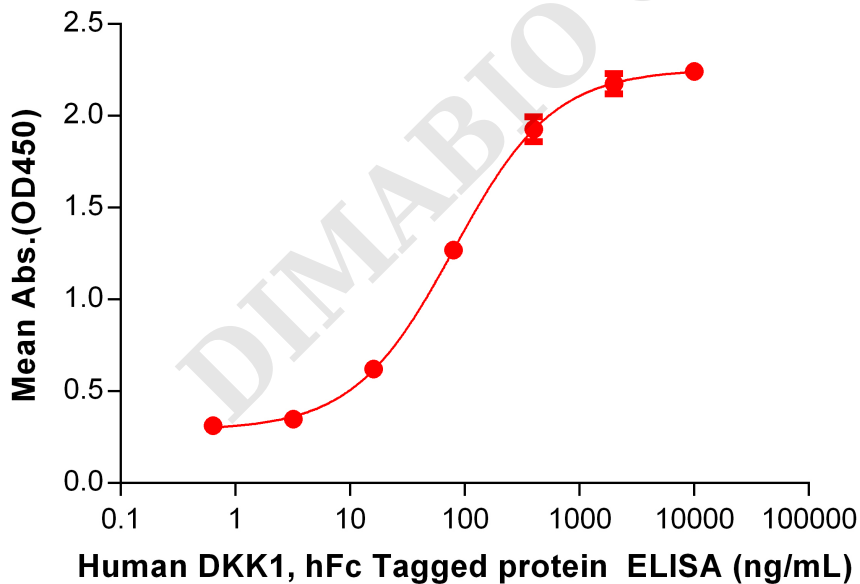


Figure 2. ELISA plate pre-coated by 5 μ g/mL (100 μ L/well) Human LRP6 Protein, His Tag (PME101193) can bind Human DKK1 Protein, hFc Tag (PME100230) in a linear range of 16-400ng/mL.

