

PRODUCT INFORMATION

Target	LRP10
Synonyms	LRP-10;LRP9;MST087;MSTP087
Description	Recombinant Human LRP10 Protein with C-terminal 6×His tag
Delivery	In Stock
Uniprot ID	Q7Z4F1
Expression Host	HEK293
Tag	C-6×His Tag
Molecular Characterization	LRP10(His17-Lys440) 6×His tag
Molecular Weight	The protein has a predicted molecular mass of 46.9 kDa after removal of the signal peptide. The apparent molecular mass of LRP10-His is approximately 55-70 kDa due to glycosylation.
Purity	The purity of the protein is greater than 85% as determined by SDS-PAGE and Coomassie blue staining.
Formulation & Reconstitution	Lyophilized from sterile PBS, pH 7.4. Normally 5 % - 8% trehalose is added as protectants before lyophilization. Please see Certificate of Analysis for specific instructions of reconstitution.
Storage&Shipping	Store at -20°C to -80°C for 12 months in lyophilized form. After reconstitution, if not intended for use within a month, aliquot and store at -80°C (Avoid repeated freezing and thawing). Lyophilized proteins are shipped at ambient temperature.
Background	This gene encodes a low density lipoprotein receptor family protein. A similar protein in mouse is thought to play a role in the uptake of apolipoprotein E-containing lipoproteins. [provided by RefSeq, Jul 2016]
Usage	Research use only
Conjugate	Unconjugated



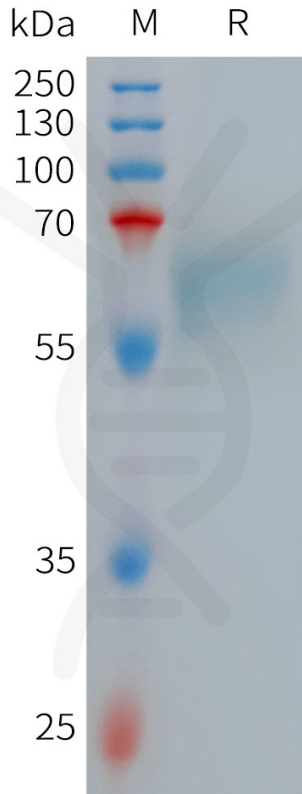


Figure 1. Human LRP10 Protein, His Tag on SDS-PAGE under reducing condition.

Human LRP10, His Tagged Protein ELISA

0.2 μg of Human LRP10, His tagged protein per well

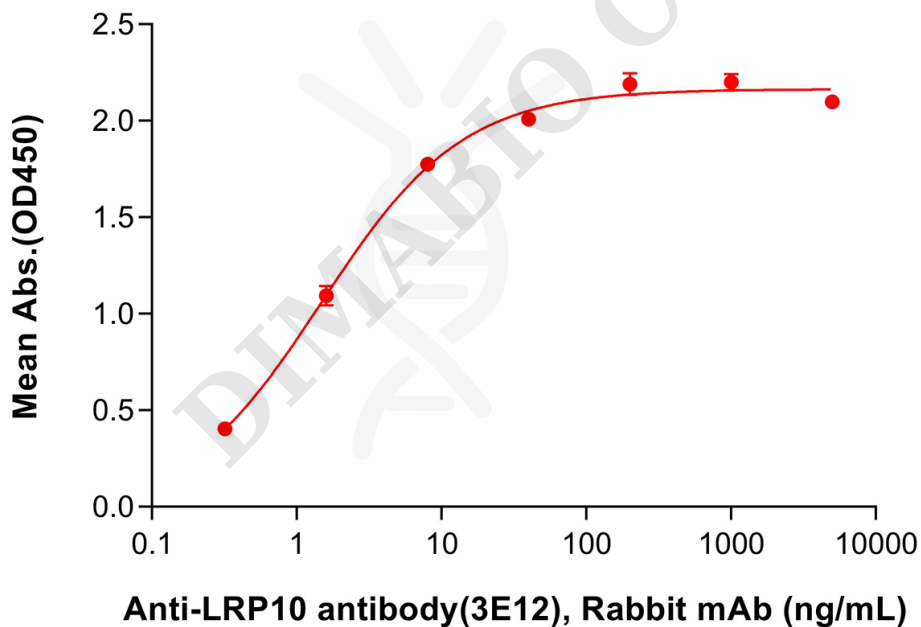


Figure 2. ELISA plate pre-coated by 2 $\mu\text{g}/\text{mL}$ (100 $\mu\text{L}/\text{well}$) Human LRP10 Protein, His Tag (PME101264) can bind Anti-LRP10 antibody(3E12), Rabbit mAb (DME101289) in a linear range of 0.32-1.6 ng/mL.

