

PRODUCT INFORMATION

Target	LGR5
Synonyms	FEX; HG38; GPR49; GPR67; GRP49
Description	Recombinant human LGR5 Protein with C-terminal human Fc tag
Delivery	In Stock
Uniprot ID	O75473
Expression Host	HEK293
Tag	C-Human Fc tag
Molecular Characterization	LGR5(Gly22-Arg561) hFc(Glu99-Ala330)
Molecular Weight	The protein has a predicted molecular mass of 86.5 kDa after removal of the signal peptide.
Purity	The purity of the protein is greater than 95% as determined by SDS-PAGE and Coomassie blue staining.
Formulation & Reconstitution	Lyophilized from sterile PBS, pH 7.4. Normally 5 % - 8% trehalose is added as protectants before lyophilization. Please see Certificate of Analysis for specific instructions of reconstitution.
Storage&Shipping	Store at -20°C to -80°C for 12 months in lyophilized form. After reconstitution, if not intended for use within a month, aliquot and store at -80°C (Avoid repeated freezing and thawing). Lyophilized proteins are shipped at ambient temperature.
Background	The protein encoded by this gene is a leucine-rich repeat-containing receptor (LGR) and member of the G protein-coupled, 7-transmembrane receptor (GPCR) superfamily. The encoded protein is a receptor for R-spondins and is involved in the canonical Wnt signaling pathway. This protein plays a role in the formation and maintenance of adult intestinal stem cells during postembryonic development. Several transcript variants encoding different isoforms have been found for this gene. [provided by RefSeq, Sep 2015]
Usage	Research use only
Conjugate	Unconjugated



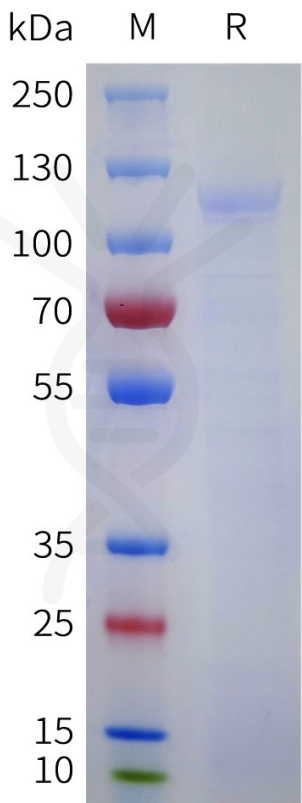


Figure 1. Human LGR5 Protein, hFc Tag on SDS-PAGE under reducing condition.

Human LGR5(22-561), hFc Tagged protein ELISA

0.2 µg of Human RSPO1(21-263), His tagged protein per well

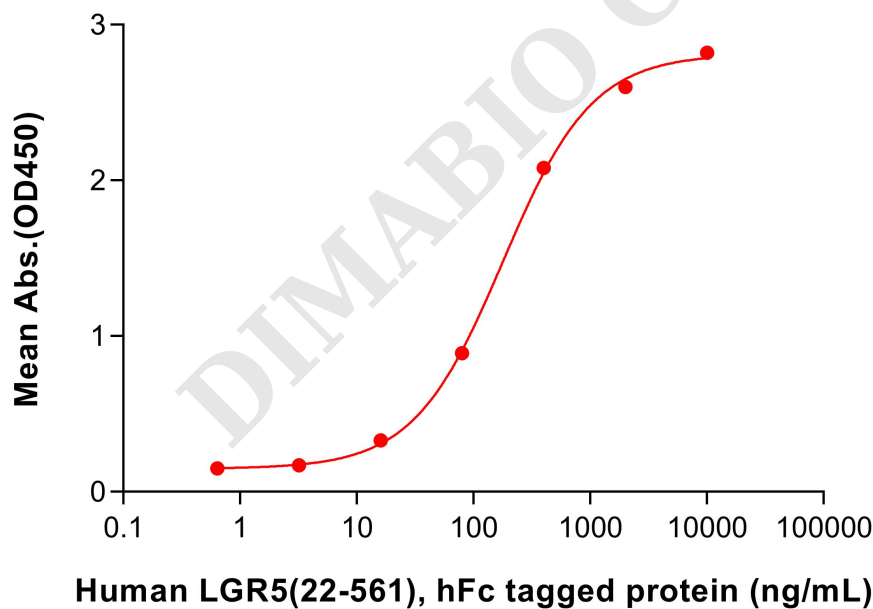


Figure 2. ELISA plate pre-coated by 2 µg/mL (100 µL/well) Human RSPO1(21-263) Protein, His Tag (PME100779) can bind Human LGR5(22-561) Protein, hFc Tag (PME101756) in a linear range of 80-400 ng/mL.

