

PRODUCT INFORMATION

Target	LAMP1
Synonyms	LAMPA, CD107a, LGP120
Description	Recombinant human LAMP1 Protein with C-terminal 10×His tag
Delivery	In Stock
Uniprot ID	P11279
Expression Host	HEK293
Tag	C-10×His tag
Molecular Characterization	LAMP1(Ala29-Met382) 10×His tag
Molecular Weight	The protein has a predicted molecular mass of 39.8 kDa after removal of the signal peptide.
Purity	The purity of the protein is greater than 85% as determined by SDS-PAGE and Coomassie blue staining.
Formulation & Reconstitution	Lyophilized from sterile PBS, pH 7.4. Normally 5 % - 8% trehalose is added as protectants before lyophilization. Please see Certificate of Analysis for specific instructions of reconstitution.
Storage&Shipping	Store at -20°C to -80°C for 12 months in lyophilized form. After reconstitution, if not intended for use within a month, aliquot and store at -80°C (Avoid repeated freezing and thawing). Lyophilized proteins are shipped at ambient temperature.
Background	The protein encoded by this gene is a member of a family of membrane glycoproteins. This glycoprotein provides selectins with carbohydrate ligands. It may also play a role in tumor cell metastasis. [provided by RefSeq, Jul 2008]
Usage	Research use only
Conjugate	Unconjugated



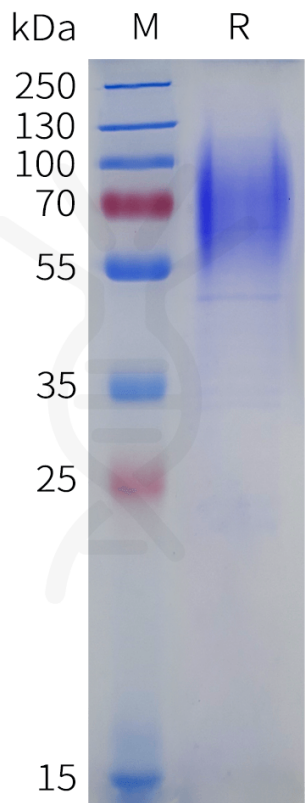


Figure 1. Human LAMP1 Protein, His Tag on SDS-PAGE under reducing condition.

