

PRODUCT INFORMATION

Target	LAIR1
Synonyms	CD305;LAIR-1
Description	Recombinant Human LAIR1 Protein with C-terminal human Fc tag
Delivery	In Stock
Uniprot ID	Q6GTX8
Expression Host	HEK293
Tag	C-Human Fc Tag
Molecular Characterization	LAIR1(Gln22-His163) hFc(Glu99-Ala330)
Molecular Weight	The protein has a predicted molecular mass of 41.6 kDa after removal of the signal peptide. The apparent molecular mass of LAIR1-hFc is approximately 35-70 kDa due to glycosylation.
Purity	The purity of the protein is greater than 95% as determined by SDS-PAGE and Coomassie blue staining.
Formulation & Reconstitution	Lyophilized from sterile PBS, pH 7.4. Normally 5 % - 8% trehalose is added as protectants before lyophilization. Please see Certificate of Analysis for specific instructions of reconstitution.
Storage&Shipping	Store at -20°C to -80°C for 12 months in lyophilized form. After reconstitution, if not intended for use within a month, aliquot and store at -80°C (Avoid repeated freezing and thawing). Lyophilized proteins are shipped at ambient temperature.
Background	The protein encoded by this gene is an inhibitory receptor found on peripheral mononuclear cells, including natural killer cells, T cells, and B cells. Inhibitory receptors regulate the immune response to prevent lysis of cells recognized as self. The gene is a member of both the immunoglobulin superfamily and the leukocyte-associated inhibitory receptor family. The gene maps to a region of 19q13.4 called the leukocyte receptor cluster, which contains at least 29 genes encoding leukocyte-expressed receptors of the immunoglobulin superfamily. The encoded protein has been identified as an anchor for tyrosine phosphatase SHP-1, and may induce cell death in myeloid leukemias. Alternative splicing results in multiple transcript variants. [provided by RefSeq, Jan 2014]
Usage	Research use only
Conjugate	Unconjugated



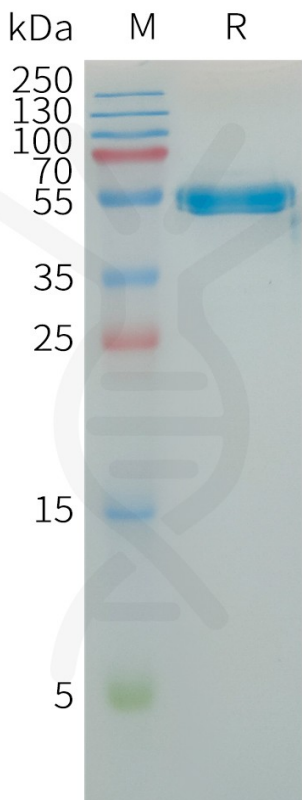
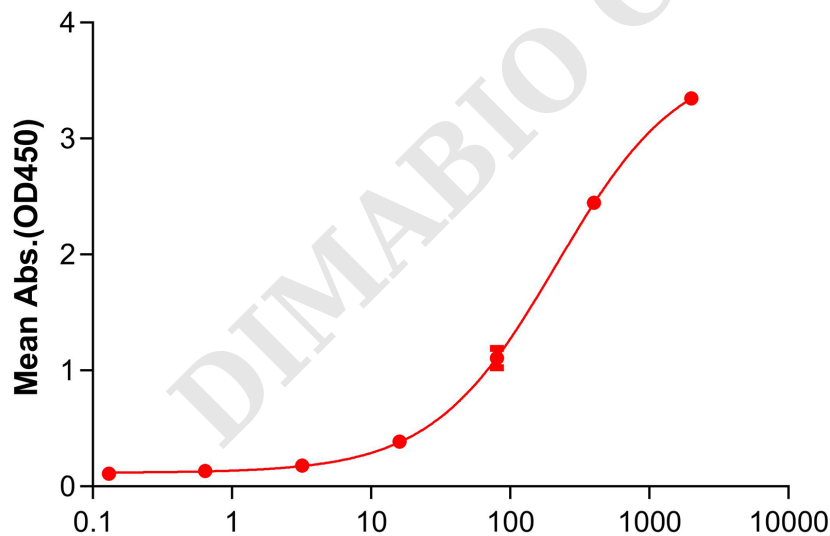


Figure 1. Human LAIR1 Protein, hFc Tag on SDS-PAGE under reducing condition.

**Human LAIR1 Protein, hFc Tag ELISA**  
1μg of Human LAIR1, hFc tagged protein per well



**Biotinylated Anti-LAIR1 antibody(1A2), Rabbit mAb (ng/mL)**

Figure 2. ELISA plate pre-coated by 10 μg/mL (100 μL/well) Human LAIR1 Protein, hFc tag (PME101252) can bind Biotinylated Anti-LAIR1 antibody(1A2), Rabbit mAb (DME101185B) in a linear range of 80-400 ng/mL .

