

PRODUCT INFORMATION

Target	LAG3
Synonyms	LAG-3;CD223
Description	Recombinant human LAG3 Protein with C-terminal Human Fc tag
Delivery	In Stock
Uniprot ID	P18627
Expression Host	HEK293
Tag	C-Human Fc Tag
Molecular Characterization	LAG3(Leu23-Leu450) hFc(Glu99-Ala330)
Molecular Weight	The protein has a predicted molecular mass of 72.3 kDa after removal of the signal peptide. The apparent molecular mass of LAG3-hFc is approximately 100-130 kDa due to glycosylation.
Purity	The purity of the protein is greater than 95% as determined by SDS-PAGE and Coomassie blue staining.
Formulation & Reconstitution	Lyophilized from sterile PBS, pH 7.4. Normally 5 % - 8% trehalose is added as protectants before lyophilization. Please see Certificate of Analysis for specific instructions of reconstitution.
Storage&Shipping	Store at -20°C to -80°C for 12 months in lyophilized form. After reconstitution, if not intended for use within a month, aliquot and store at -80°C (Avoid repeated freezing and thawing). Lyophilized proteins are shipped at ambient temperature.
Background	Lymphocyte-activation protein 3 belongs to Ig superfamily and contains 4 extracellular Ig-like domains. The LAG3 gene contains 8 exons. The sequence data, exon/intron organization, and chromosomal localization all indicate a close relationship of LAG3 to CD4. [provided by RefSeq, Jul 2008]
Usage	Research use only
Conjugate	Unconjugated



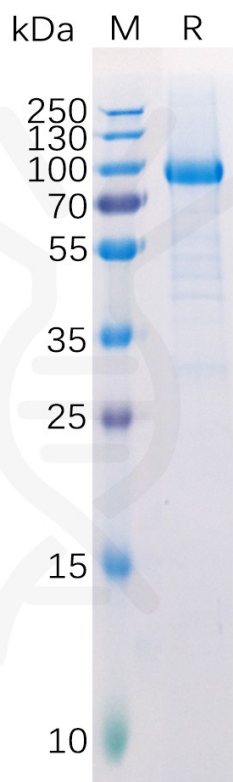


Figure 1. Human LAG3 Protein, hFc Tag on SDS-PAGE under reducing condition.

Human LAG3 Protein, hFc Tag ELISA

0.2 μ g of Human FGL1, His Tagged protein per well

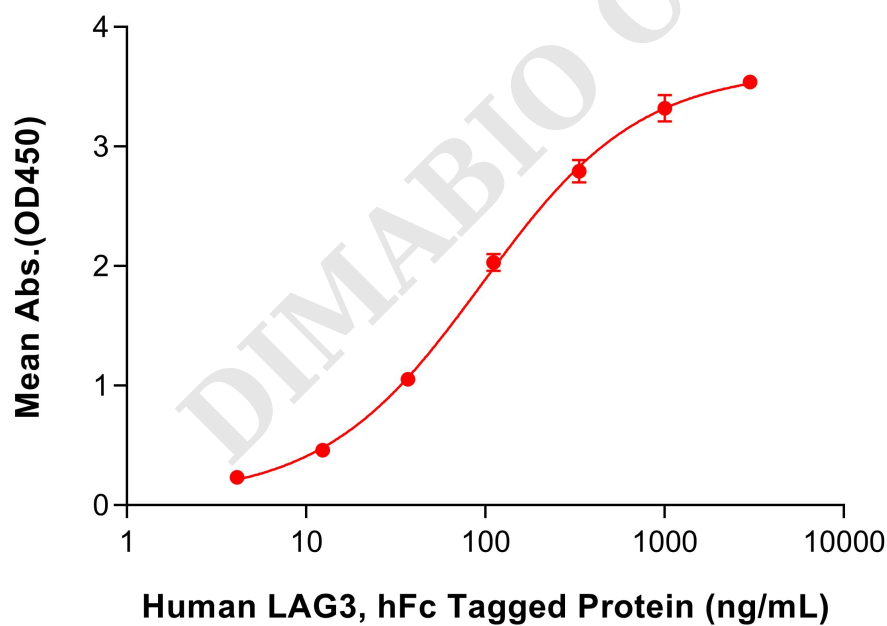


Figure 2. ELISA plate pre-coated by 2 μ g/mL (100 μ L/well) Human FGL1 Protein, His Tag (PME101159) can bind Human LAG3 Protein, hFc Tag (PME100513) in a linear range of 80-200 ng/mL.

