

PRODUCT INFORMATION

Target	KLRG1
Synonyms	CLEC15A;MAFA;MAFAL
Description	Recombinant Human KLRG1 protein with N-terminal human Fc
Delivery	In Stock
Uniprot ID	Q96E93
Expression Host	HEK293
Tag	N-Human Fc Tag
Molecular Characterization	hFc(Glu99-Ala330) KLRG1(Leu60-Phe195)
Molecular Weight	The protein has a predicted molecular mass of 41.6 kDa after removal of the signal peptide. The apparent molecular mass of hFc-KLRG1 is approximately 55-70 kDa due to glycosylation.
Purity	The purity of the protein is greater than 90% as determined by SDS-PAGE and Coomassie blue staining.
Formulation & Reconstitution	Lyophilized from sterile PBS, pH 7.4. Normally 5 % - 8% trehalose is added as protectants before lyophilization. Please see Certificate of Analysis for specific instructions of reconstitution.
Storage&Shipping	Store at -20°C to -80°C for 12 months in lyophilized form. After reconstitution, if not intended for use within a month, aliquot and store at -80°C (Avoid repeated freezing and thawing). Lyophilized proteins are shipped at ambient temperature.
Background	Natural killer (NK) cells are lymphocytes that can mediate lysis of certain tumor cells and virus-infected cells without previous activation. They can also regulate specific humoral and cell-mediated immunity. The protein encoded by this gene belongs to the killer cell lectin-like receptor (KLR) family, which is a group of transmembrane proteins preferentially expressed in NK cells. Studies in mice suggested that the expression of this gene may be regulated by MHC class I molecules.
Usage	Research use only
Conjugate	Unconjugated



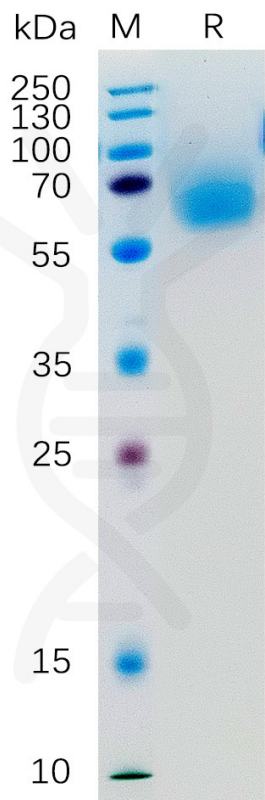


Figure 1. Human KLRG1 Protein, hFc Tag on SDS-PAGE under reducing condition.

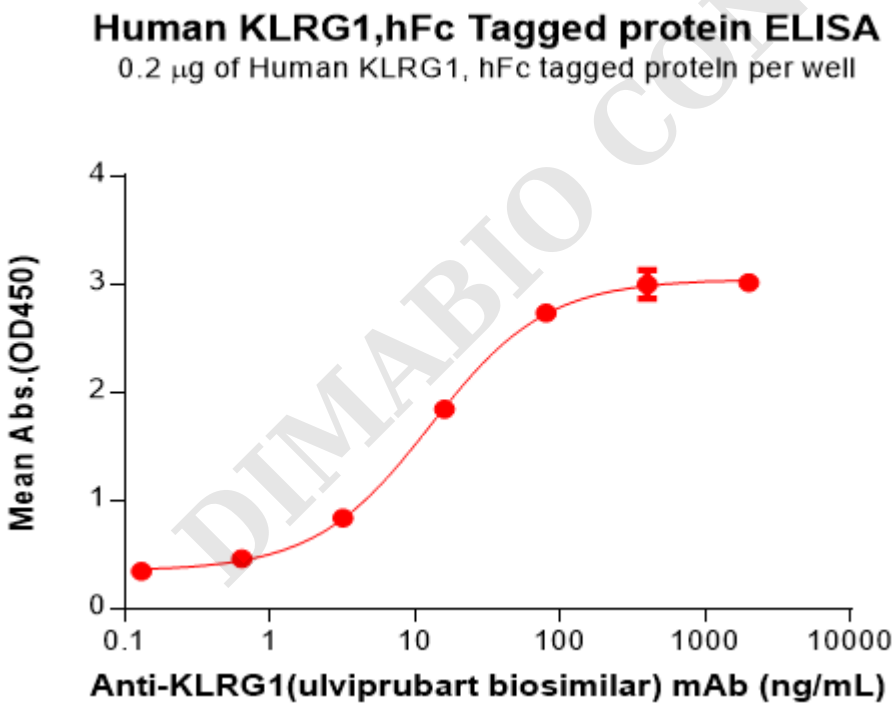


Figure 2. ELISA plate pre-coated by 2  $\mu$ g/mL (100  $\mu$ L/well) Human KLRG1 Protein, hFc Tag(PME100321) can bind Anti-KLRG1(ulviprubart biosimilar) mAb(BME100162) in a linear range of 3.20-80 ng/mL.

