

**PRODUCT INFORMATION**

<b>Target</b>	KLK2
<b>Synonyms</b>	KLK2A2, hGK-1, hK2
<b>Description</b>	Recombinant human KLK2 Protein with C-terminal human Fc tag
<b>Delivery</b>	In Stock
<b>Uniprot ID</b>	P20151
<b>Expression Host</b>	HEK293
<b>Tag</b>	C-Human Fc tag
<b>Molecular Characterization</b>	KLK2(Ile25-Pro261)+hFc(Glu99-Ala330)
<b>Molecular Weight</b>	The protein has a predicted molecular mass of 52.3 kDa after removal of the signal peptide.
<b>Purity</b>	The purity of the protein is greater than 95% as determined by SDS-PAGE and Coomassie blue staining.
<b>Formulation &amp; Reconstitution</b>	Lyophilized from sterile PBS, pH 7.4. Normally 5% - 8% trehalose is added as protectants before lyophilization. Please see Certificate of Analysis for specific instructions of reconstitution.
<b>Storage&amp;Shipping</b>	Store at -20°C to -80°C for 12 months in lyophilized form. After reconstitution, if not intended for use within a month, aliquot and store at -80°C (Avoid repeated freezing and thawing). Lyophilized proteins are shipped at ambient temperature.
<b>Background</b>	This gene encodes a member of the granular kallikrein protein family. Kallikreins are a subgroup of serine proteases that are clustered on chromosome 19. Members of this family are involved in a diverse array of biological functions. The protein encoded by this gene is a highly active trypsin-like serine protease that selectively cleaves at arginine residues. This protein is primarily expressed in prostatic tissue and is responsible for cleaving pro-prostate-specific antigen into its enzymatically active form. This gene is highly expressed in prostate tumor cells and may be a prognostic maker for prostate cancer risk. Alternate splicing results in both coding and non-coding transcript variants. [provided by RefSeq, Jan 2012]
<b>Usage</b>	Research use only
<b>Conjugate</b>	Unconjugated



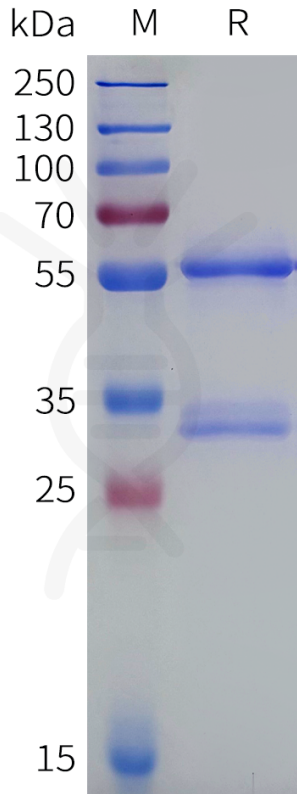


Figure 1. Human KLK2 Protein, hFc Tag on SDS-PAGE under reducing condition.

### Human KLK2, hFc Tagged Protein ELISA

0.2  $\mu$ g of Human KLK2, hFc tagged protein per well

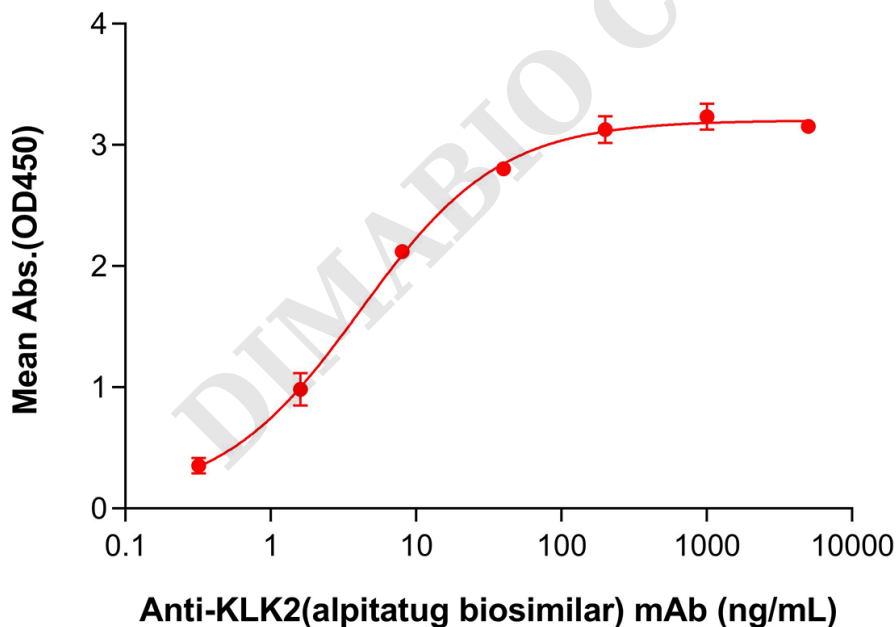


Figure 2. ELISA plate pre-coated by 2  $\mu$ g/mL (100  $\mu$ L/well) Human KLK2 Protein, hFc Tag (PME101966) can bind Anti-KLK2(alpitatug biosimilar) mAb (BME100746) in a linear range of 1.6–8.0 ng/mL. In order to specifically detect BME100746, HRP Conjugated- Goat anti Human Fab was used as detection antibody.

