

PRODUCT INFORMATION

Target	KISS1R
Synonyms	HH8; CPPB1; GPR54; AXOR12; KISS-1R; HOT7T175
Description	Recombinant human KISS1R Protein with C-terminal human Fc tag
Delivery	In Stock
Uniprot ID	Q969F8
Expression Host	HEK293
Tag	C-Human Fc tag
Molecular Characterization	KISS1R(Met1-Ala42) hFc(Glu99-Ala330)
Molecular Weight	The protein has a predicted molecular mass of 30.0 kDa after removal of the signal peptide.
Purity	The purity of the protein is greater than 95% as determined by SDS-PAGE and Coomassie blue staining.
Formulation & Reconstitution	Lyophilized from sterile PBS, pH 7.4. Normally 5 % - 8% trehalose is added as protectants before lyophilization. Please see Certificate of Analysis for specific instructions of reconstitution.
Storage & Shipping	Store at -20°C to -80°C for 12 months in lyophilized form. After reconstitution, if not intended for use within a month, aliquot and store at -80°C (Avoid repeated freezing and thawing). Lyophilized proteins are shipped at ambient temperature.
Background	The protein encoded by this gene is a galanin-like G protein-coupled receptor that binds metastatin, a peptide encoded by the metastasis suppressor gene KISS1. The tissue distribution of the expressed gene suggests that it is involved in the regulation of endocrine function, and this is supported by the finding that this gene appears to play a role in the onset of puberty. Mutations in this gene have been associated with hypogonadotropic hypogonadism and central precocious puberty. [provided by RefSeq, Jul 2008]
Usage	Research use only
Conjugate	Unconjugated



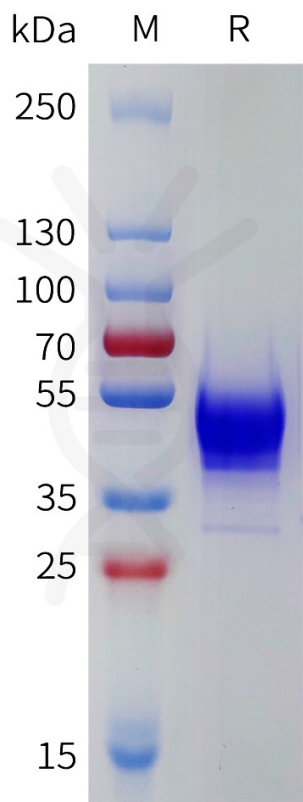


Figure 1. Human KISS1R Protein, hFc Tag on SDS-PAGE under reducing condition.

