

PRODUCT INFORMATION

Target	IL31RA
Synonyms	CRL; GPL; CRL3; GLMR; GLM-R; PLCA2; hGLM-R; IL-31RA; PRO21384; zcytoR17
Description	Recombinant human IL31RA(20-225) Protein with C-terminal human Fc tag
Delivery	In Stock
Uniprot ID	Q8NI17
Expression Host	HEK293
Tag	C-Human Fc tag
Molecular Characterization	IL31RA(Ala20-Glu225) hFc(Glu99-Ala330)
Molecular Weight	The protein has a predicted molecular mass of 50.1 kDa after removal of the signal peptide. The apparent molecular mass of IL31RA(20-225)-hFc is approximately 55-100 kDa due to glycosylation.
Purity	The purity of the protein is greater than 90% as determined by SDS-PAGE and Coomassie blue staining.
Formulation & Reconstitution	Lyophilized from sterile PBS, pH 7.4. Normally 5 % - 8% trehalose is added as protectants before lyophilization. Please see Certificate of Analysis for specific instructions of reconstitution.
Storage&Shipping	Store at -20°C to -80°C for 12 months in lyophilized form. After reconstitution, if not intended for use within a month, aliquot and store at -80°C (Avoid repeated freezing and thawing). Lyophilized proteins are shipped at ambient temperature.
Background	The protein encoded by this gene belongs to the type I cytokine receptor family. This receptor, with homology to gp130, is expressed on monocytes, and is involved in IL-31 signaling via activation of STAT-3 and STAT-5. It functions either as a monomer, or as part of a receptor complex with oncostatin M receptor (OSMR). Several alternatively spliced transcript variants encoding different isoforms have been noted for this gene.[provided by RefSeq, Jun 2011]
Usage	Research use only
Conjugate	Unconjugated



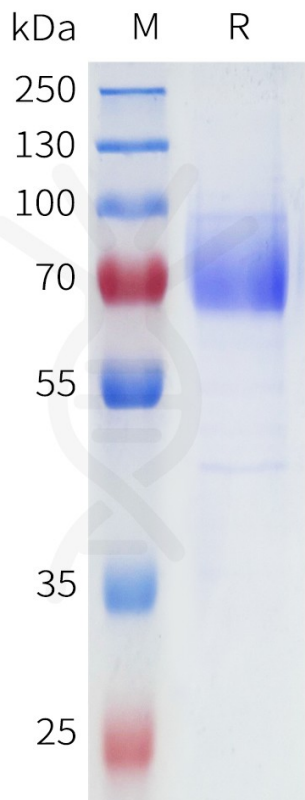


Figure 1. Human IL31RA(20-225) Protein, hFc Tag on SDS-PAGE under reducing condition.

Human IL31RA(20-225), hFc Tagged protein ELISA
0.2 µg of Human IL31RA(20-225), hFc tagged protein per well

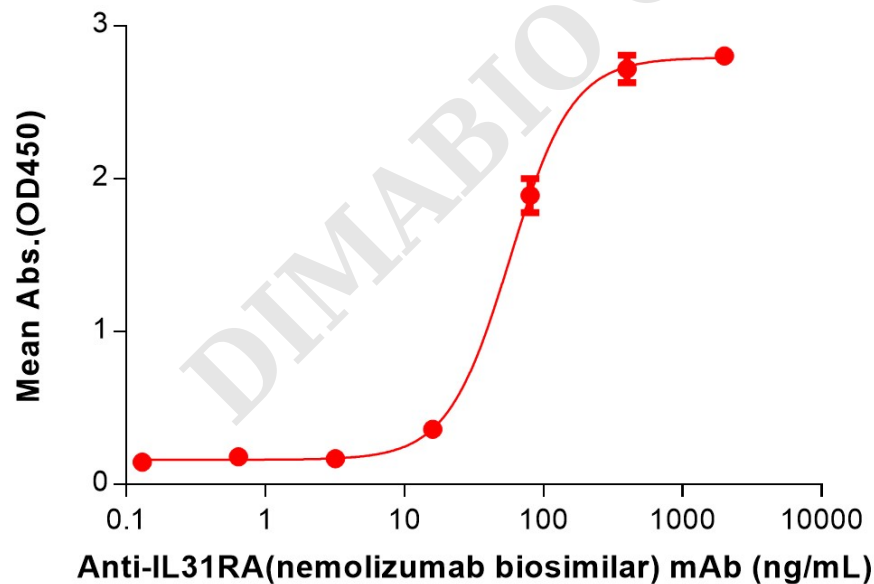


Figure 2. ELISA plate pre-coated by 2 µg/mL (100 µL/well) Human IL31RA(20-225) Protein, hFc Tag (PME101699) can bind Anti-IL31RA(nemolizumab biosimilar) mAb (BME100231) in a linear range of 3.20-400 ng/mL.

