

PRODUCT INFORMATION

Target	IL2RB
Synonyms	IL2RB;RP5-1170K4.6;CD122;P70-75
Description	Recombinant human IL2RB protein with C-terminal 6×His tag
Delivery	In Stock
Uniprot ID	P14784
Expression Host	HEK293
Tag	C-6×His Tag
Molecular Characterization	IL2RB(Ala27-Asp239) 6×His tag
Molecular Weight	The protein has a predicted molecular mass of 25.4 kDa after removal of the signal peptide.
Purity	The purity of the protein is greater than 95% as determined by SDS-PAGE and Coomassie blue staining.
Formulation & Reconstitution	Lyophilized from sterile PBS, pH 7.4. Normally 5 % - 8% trehalose is added as protectants before lyophilization. Please see Certificate of Analysis for specific instructions of reconstitution.
Storage & Shipping	Store at -20°C to -80°C for 12 months in lyophilized form. After reconstitution, if not intended for use within a month, aliquot and store at -80°C (Avoid repeated freezing and thawing). Lyophilized proteins are shipped at ambient temperature.
Background	The interleukin 2 receptor, which is involved in T cell-mediated immune responses, is present in 3 forms with respect to ability to bind interleukin 2. The low affinity form is a monomer of the alpha subunit and is not involved in signal transduction. The intermediate affinity form consists of an alpha/beta subunit heterodimer, while the high affinity form consists of an alpha/beta/gamma subunit heterotrimer. Both the intermediate and high affinity forms of the receptor are involved in receptor-mediated endocytosis and transduction of mitogenic signals from interleukin 2. The protein encoded by this gene represents the beta subunit and is a type I membrane protein. The use of alternative promoters results in multiple transcript variants encoding the same protein. The protein is primarily expressed in the hematopoietic system. The use by some variants of an alternate promoter in an upstream long terminal repeat (LTR) results in placenta-specific expression.
Usage	Research use only
Conjugate	Unconjugated



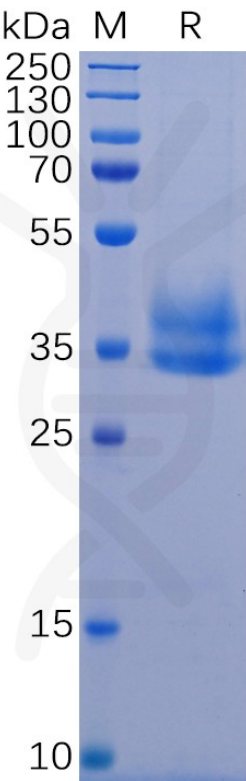


Figure 1. Human IL2RB Protein, His Tag on SDS-PAGE under reducing condition.

