

PRODUCT INFORMATION

Target	IL21R
Synonyms	CD360;IMD56;NILR
Description	Recombinant Human IL21R with C-terminal mouse Fc tag
Delivery	In Stock
Uniprot ID	Q9HBE5
Expression Host	HEK293
Tag	C-Mouse Fc Tag
Molecular Characterization	IL21R(Cys20-Glu232) mFc(Pro99-Lys330)
Molecular Weight	The protein has a predicted molecular mass of 50.7 kDa after removal of the signal peptide. The apparent molecular mass of IL21R-mFc is approximately 55-70 kDa due to glycosylation.
Purity	The purity of the protein is greater than 95% as determined by SDS-PAGE and Coomassie blue staining.
Formulation & Reconstitution	Lyophilized from sterile PBS, pH 7.4. Normally 5 % - 8% trehalose is added as protectants before lyophilization. Please see Certificate of Analysis for specific instructions of reconstitution.
Storage & Shipping	Store at -20°C to -80°C for 12 months in lyophilized form. After reconstitution, if not intended for use within a month, aliquot and store at -80°C (Avoid repeated freezing and thawing). Lyophilized proteins are shipped at ambient temperature.
Background	The protein encoded by this gene is a cytokine receptor for interleukin 21 (IL21). It belongs to the type I cytokine receptors, and has been shown to form a heterodimeric receptor complex with the common gamma-chain, a receptor subunit also shared by the receptors for interleukin 2, 4, 7, 9, and 15. This receptor transduces the growth promoting signal of IL21, and is important for the proliferation and differentiation of T cells, B cells, and natural killer (NK) cells. The ligand binding of this receptor leads to the activation of multiple downstream signaling molecules, including JAK1, JAK3, STAT1, and STAT3. Knockout studies of a similar gene in mouse suggest a role for this gene in regulating immunoglobulin production. Three alternatively spliced transcript variants have been described.
Usage	Research use only
Conjugate	Unconjugated



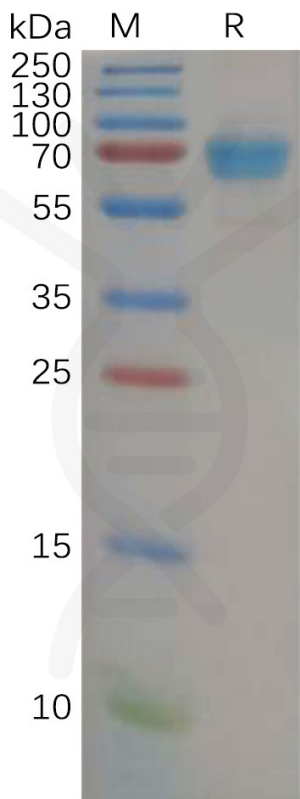


Figure 1. Human IL21R Protein, mFc Tag on SDS-PAGE under reducing condition

**Human IL21R,mFc Tagged protein ELISA**  
0.2 µg of Human IL21R, mFc tagged protein per well

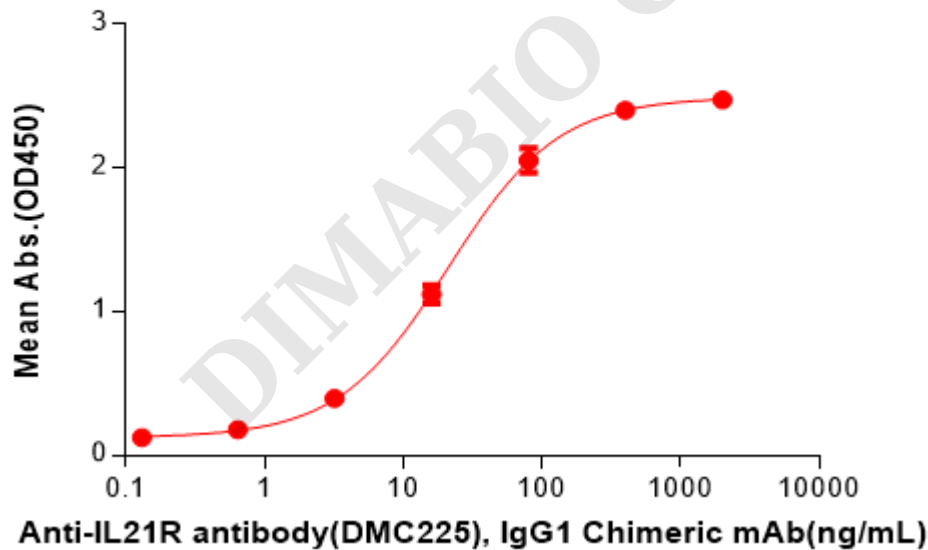


Figure 2. ELISA plate pre-coated by 2 µg/mL (100 µL/well) Human IL21R Protein, mFc Tag(PME100586) can bind Anti-IL21R antibody(DMC225), IgG1 Chimeric mAb in a linear range of 3.20-80 ng/mL.



**Human IL21R, mFc Tagged Protein ELISA**

0.2 µg of Human IL21R, mFc tagged protein per well

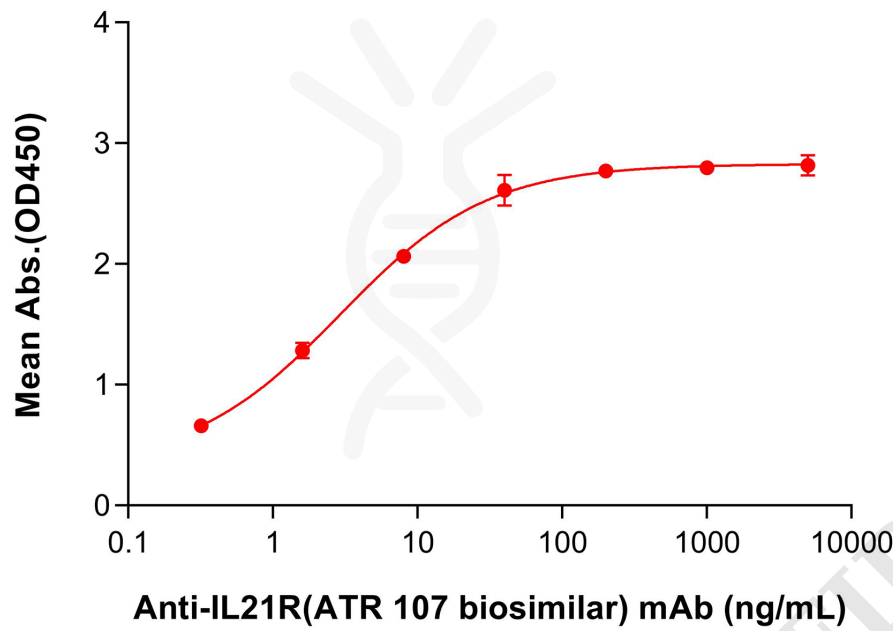


Figure 3. ELISA plate pre-coated by 2 µg/mL (100 µL/well) Human IL21R Protein, mFc Tag (PME100586) can bind Anti-IL21R(ATR 107 biosimilar) mAb (BME100292) in a linear range of 1.6-8.0 ng/mL.

