

PRODUCT INFORMATION

| | |
|------------------------------|--|
| Target | IL1R2 |
| Synonyms | IL1RB; CD121b; IL1R2c; CDw121b; IL-1R-2; IL-1RT2; IL-1RT-2 |
| Description | Recombinant human IL1R2 Protein with C-terminal human Fc tag |
| Delivery | In Stock |
| Uniprot ID | P27930 |
| Expression Host | HEK293 |
| Tag | C-Human Fc tag |
| Molecular Characterization | IL1R2(Phe14-Glu343) hFc(Glu99-Ala330) |
| Molecular Weight | The protein has a predicted molecular mass of 63.9 kDa after removal of the signal peptide. The apparent molecular mass of IL1R2-hFc is approximately 70-130 kDa due to glycosylation. |
| Purity | The purity of the protein is greater than 95% as determined by SDS-PAGE and Coomassie blue staining. |
| Formulation & Reconstitution | Lyophilized from sterile PBS, pH 7.4. Normally 5 % - 8% trehalose is added as protectants before lyophilization. Please see Certificate of Analysis for specific instructions of reconstitution. |
| Storage&Shipping | Store at -20°C to -80°C for 12 months in lyophilized form. After reconstitution, if not intended for use within a month, aliquot and store at -80°C (Avoid repeated freezing and thawing). Lyophilized proteins are shipped at ambient temperature. |
| Background | The protein encoded by this gene is a cytokine receptor that belongs to the interleukin 1 receptor family. This protein binds interleukin alpha (IL1A), interleukin beta (IL1B), and interleukin 1 receptor, type I(IL1R1/IL1RA), and acts as a decoy receptor that inhibits the activity of its ligands. Interleukin 4 (IL4) is reported to antagonize the activity of interleukin 1 by inducing the expression and release of this cytokine. This gene and three other genes form a cytokine receptor gene cluster on chromosome 2q12. Alternative splicing results in multiple transcript variants and protein isoforms. Alternative splicing produces both membrane-bound and soluble proteins. A soluble protein is also produced by proteolytic cleavage. [provided by RefSeq, May 2012] |
| Usage | Research use only |
| Conjugate | Unconjugated |



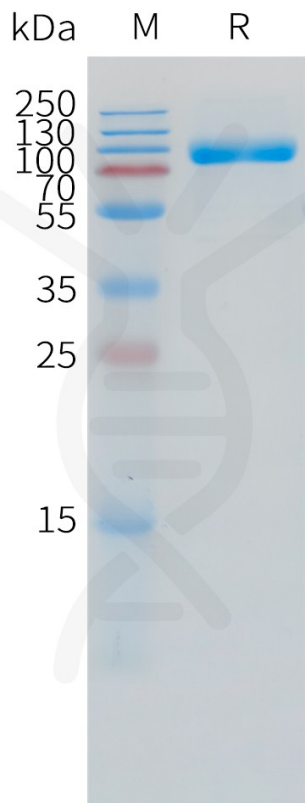


Figure 1. Human IL1R2 Protein, hFc Tag on SDS-PAGE under reducing condition.

