

PRODUCT INFORMATION

Target	IL-20RA
Synonyms	Interleukin-20 Receptor Subunit Alpha;IL-20 Receptor Subunit Alpha;IL-20R-Alpha;IL-20RA;Cytokine Receptor Class-II Member 8;Cytokine Receptor Family 2 Member 8;CRF2-8;IL-20R1;ZcytoR7;IL20RA
Description	Recombinant Human Interleukin-20 Receptor Subunit Alpha is produced by our Mammalian expression system and the target gene encoding Val30-Lys250 is expressed with a Fc tag at the C-terminus.
Delivery	In Stock
Uniprot ID	Q9UHF4
Expression Host	HEK293
Tag	C-Fc Tag
Molecular Characterization	Not available
Molecular Weight	52.4 KDa
Purity	Greater than 95% as determined by reducing SDS-PAGE.
Formulation & Reconstitution	Lyophilized from a 0.2 μm filtered solution of PBS, pH 7.4.
Storage & Shipping	Store at -20°C to -80°C for 12 months in lyophilized form. After reconstitution, if not intended for use within a month, aliquot and store at -80°C (Avoid repeated freezing and thawing). Lyophilized proteins are shipped at ambient temperature.
Background	Interleukin-20 Receptor Subunit a (IL20RA) is a single-pass type I membrane protein that is a member of the type II cytokine receptor family. IL20RA is synthesized a 553 amino acid glycoprotein precursor containing a 29 amino acid signal peptide, a 221 amino acid extracellular domain with two fibronectin type-III domains, a 24 amino acid transmembrane region, and a 279 amino acid intracellular domain. IL20RA is widely expressed with highest levels found in skin and testis and high levels in brain. IL20RA forms a heterodimer with IL20RB, and the complex serves as a receptor for IL19, IL20 and IL24. IL20RA also forms a heterodimer with the unique and specific receptor IL10RB and functions as the receptor for IL26.
Usage	Research use only
Conjugate	Unconjugated



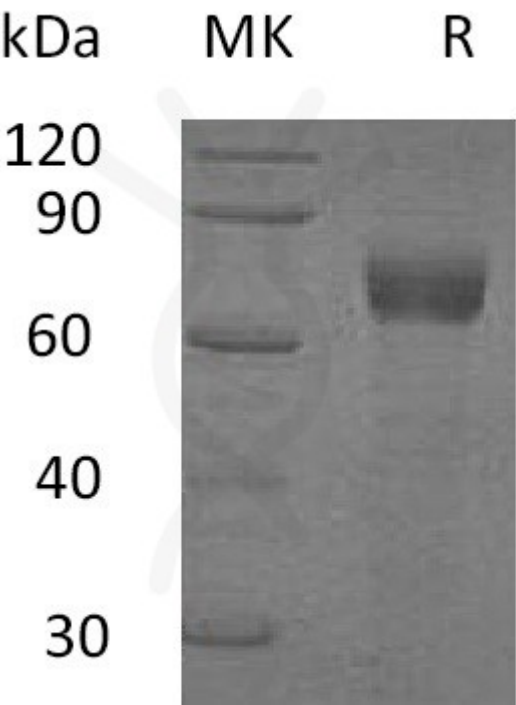


Figure 1. Greater than 95% as determined by reducing SDS-PAGE.

