

PRODUCT INFORMATION

Target	IL-2
Synonyms	Interleukin-2;IL-2;T-Cell Growth Factor;TCGF;Aldesleukin;IL2
Description	Recombinant Human Interleukin-2 Superkine is produced by our Mammalian expression system and the target gene encoding Ala21-Thr153 (L100F, R101D, L105V, I106V, I112F) is expressed with a 6His tag at the C-terminus.
Delivery	In Stock
Uniprot ID	P60568
Expression Host	HEK293
Tag	C-6×His Tag
Molecular Characterization	Not available
Molecular Weight	16.5 KDa
Purity	Greater than 95% as determined by reducing SDS-PAGE.
Formulation & Reconstitution	Lyophilized from a 0.2 μm filtered solution of 4mM HCl. Always centrifuge tubes before opening. Do not mix by vortex or pipetting. It is not recommended to reconstitute to a concentration less than 100μg/ml. Dissolve the lyophilized protein in 4mM HCl. Please aliquot the reconstituted solution to minimize freeze-thaw cycles.
Storage&Shipping	The product is shipped at ambient temperature. Lyophilized protein should be stored at < -20°C, though stable at room temperature for 3 weeks. Reconstituted protein solution can be stored at 4-7°C for 2-7 days. Aliquots of reconstituted samples are stable at < -20°C for 3 months.
Background	Interleukin-2(IL-2) is an interleukin, a type of cytokine signaling molecule in the immune system,belongs to the IL-2 family. It is a powerful immunoregulatory lymphokine produced by T-cells in response to antigenic or mitogenic stimulation. IL-2/IL-2R signaling is required for T-cell proliferation and other fundamental functions that are essential for the immune response. IL-2 stimulates growth and differentiation of B-cells, NK cells, lymphokine-activated killer cells, monocytes, macrophages and oligodendrocytes. New research has shown that IL-2 mutant reduced toxicity while being more potent at stimulating anti-tumor effector immune cells.
Usage	Research use only
Conjugate	Unconjugated



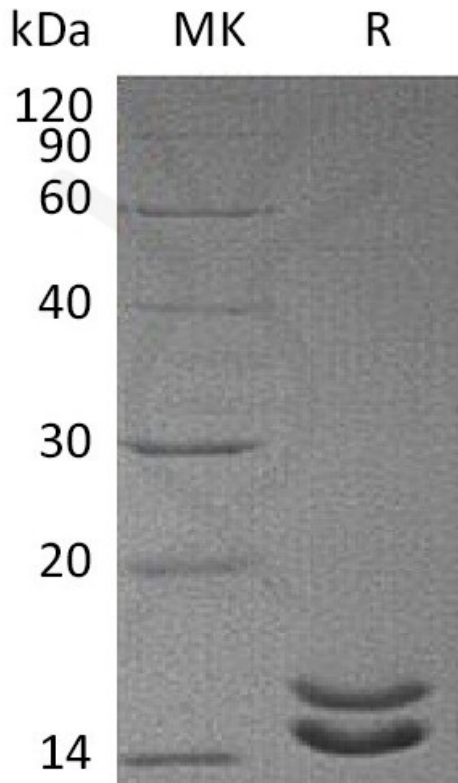


Figure 1. Greater than 95% as determined by reducing SDS-PAGE.

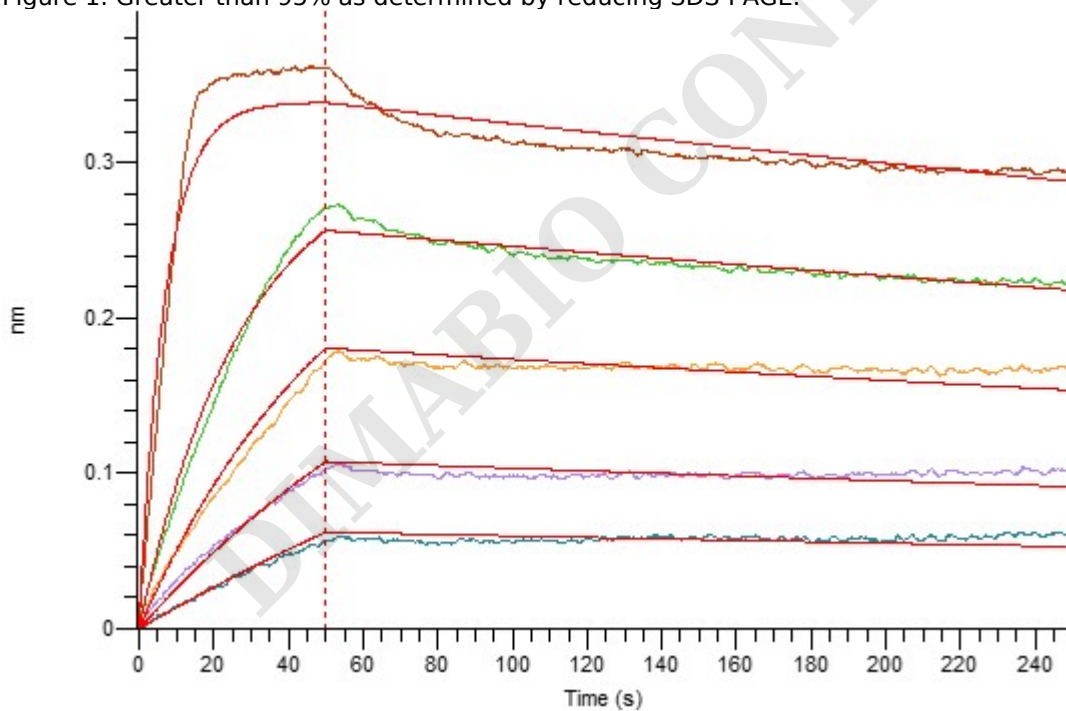


Figure 2. Loaded Human IL-2RB-Fc on Protein A Biosensor, can bind Human IL-2 Superkine with an affinity constant of 0.58 nM as determined in BLI assay.



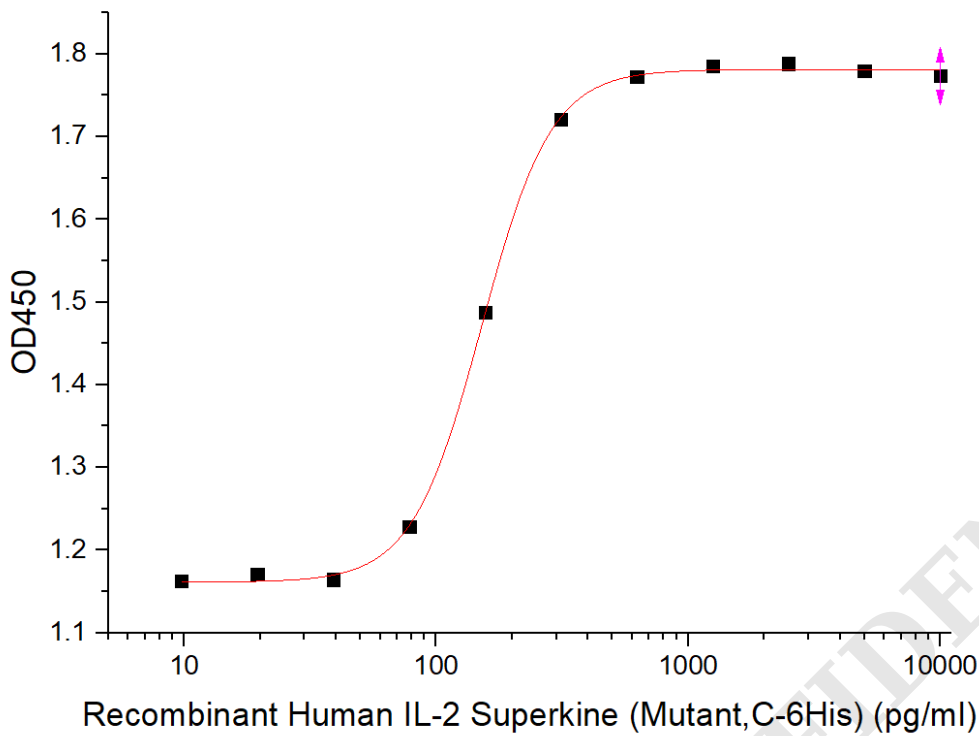


Figure 3. Measured in a cell proliferation assay using CTLL-2 mouse cytotoxic T cells. The ED50 for this effect is 151.39 pg/ml.

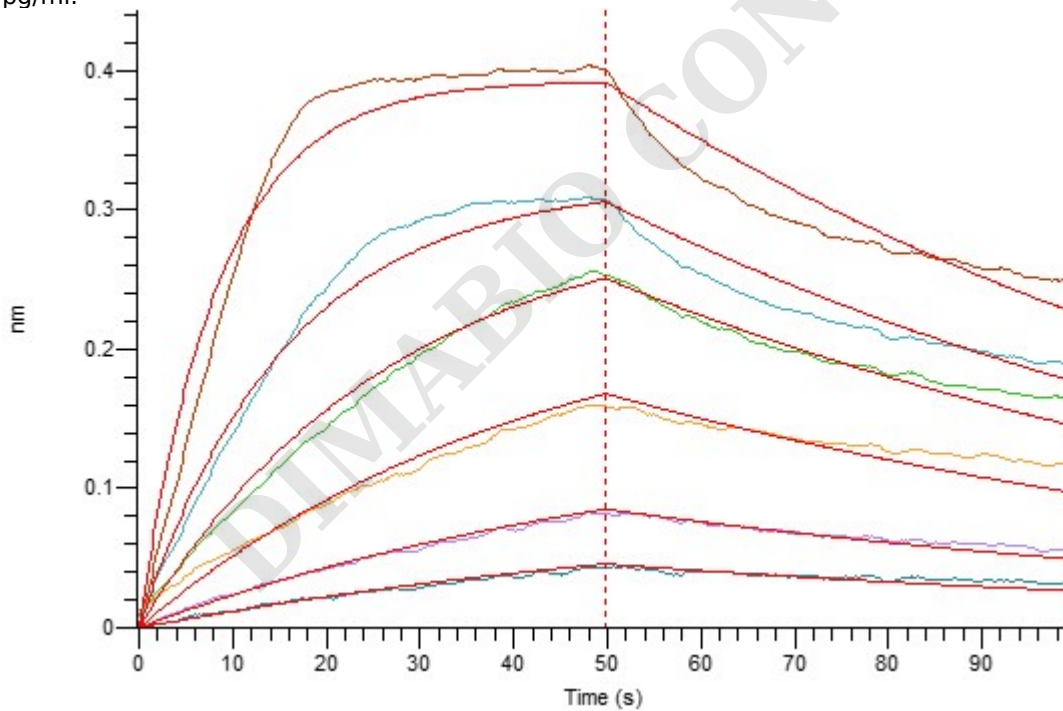


Figure 4. Loaded Human IL-2RA-Fc on Protein A Biosensor, can bind Human IL-2 Superkine with an affinity constant of 10.4 nM as determined in BLI assay.

