

PRODUCT INFORMATION

Target	IgHE
Synonyms	IgE
Description	Recombinant human IGHE(106-427) Protein with C-terminal Flag and Twin-Strep Tag
Delivery	In Stock
Uniprot ID	P01854
Expression Host	HEK293
Tag	C-Flag and Twin-Strep Tag
Molecular Characterization	IGHE(Ser106-Gly427) Flag and Twin-Strep Tag
Molecular Weight	The protein has a predicted molecular mass of 40.2 kDa after removal of the signal peptide. The apparent molecular mass of IGHE(106-427)-FLAG-Twin Strep is approximately 35-55 kDa due to glycosylation.
Purity	The purity of the protein is greater than 95% as determined by SDS-PAGE and Coomassie blue staining.
Formulation & Reconstitution	Lyophilized from sterile PBS, pH 7.4. Normally 5 % - 8% trehalose is added as protectants before lyophilization. Please see Certificate of Analysis for specific instructions of reconstitution.
Storage & Shipping	Store at -20°C to -80°C for 12 months in lyophilized form. After reconstitution, if not intended for use within a month, aliquot and store at -80°C (Avoid repeated freezing and thawing). Lyophilized proteins are shipped at ambient temperature.
Background	Enables immunoglobulin receptor binding activity. Involved in several processes, including B cell mediated immunity; Fc receptor-mediated immune complex endocytosis; and leukocyte degranulation. Located in extracellular space and plasma membrane. Part of IgE B cell receptor complex. [provided by Alliance of Genome Resources, Apr 2025]
Usage	Research use only
Conjugate	Unconjugated



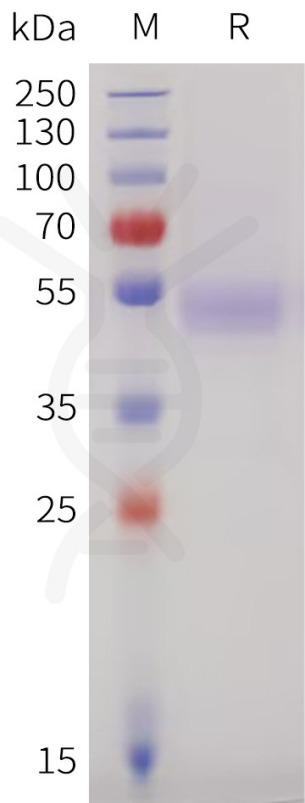


Figure 1. Human IGHE(106-427) Protein, Flag and Twin-Strep Tag on SDS-PAGE under reducing condition.

