

PRODUCT INFORMATION

Target	IgG1-Fc
Synonyms	IgG1 Fc Protein
Description	Recombinant Human IgG1-Fc Protein
Delivery	In Stock
Uniprot ID	P01857
Expression Host	HEK293
Tag	N/A
Molecular Characterization	hFc(Glu99-Ala330)
Molecular Weight	The protein has a predicted molecular mass of 27.7 kDa after removal of the signal peptide. The apparent molecular mass of IgG1-Fc is approximately 30-40 kDa due to glycosylation.
Purity	The purity of the protein is greater than 95% as determined by SDS-PAGE and Coomassie blue staining.
Formulation & Reconstitution	Lyophilized from sterile PBS, pH 7.4. Normally 5 % - 8% trehalose is added as protectants before lyophilization. Please see Certificate of Analysis for specific instructions of reconstitution.
Storage&Shipping	Store at -20°C to -80°C for 12 months in lyophilized form. After reconstitution, if not intended for use within a month, aliquot and store at -80°C (Avoid repeated freezing and thawing). Lyophilized antibodies are shipped at ambient temperature.
Background	IGHG1 (Immunoglobulin Heavy Constant Gamma 1 (G1m Marker)) is a Protein Coding gene. Diseases associated with IGHG1 include Leukemia;Chronic Lymphocytic and Heavy Chain Deposition Disease. Among its related pathways are Interleukin-4 and 13 signaling and IL4-mediated signaling events. Gene Ontology (GO) annotations related to this gene include antigen binding. An important paralog of this gene is IGHG3.
Usage	Research use only
Conjugate	Unconjugated



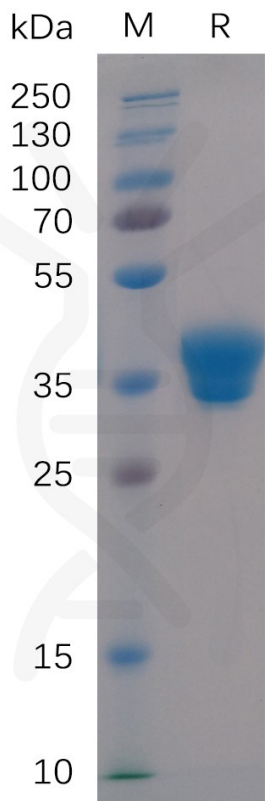


Figure 1. Human IgG1-Fc Protein on SDS-PAGE under reducing condition.

