

PRODUCT INFORMATION

Target	IGF-1R
Synonyms	IGFR, CD221, IGFI, JTK13
Description	Recombinant human IGF-1R Protein with C-terminal human Fc tag
Delivery	In Stock
Uniprot ID	P08069
Expression Host	HEK293
Tag	C-Human Fc tag
Molecular Characterization	IGF-1R(Glu31-Asn932) hFc(GLU99-ALA330)
Molecular Weight	The protein has a predicted molecular mass of 129.0 kDa after removal of the signal peptide.
Purity	The purity of the protein is greater than 95% as determined by SDS-PAGE and Coomassie blue staining.
Formulation & Reconstitution	Lyophilized from sterile PBS, pH 7.4. Normally 5 % - 8% trehalose is added as protectants before lyophilization. Please see Certificate of Analysis for specific instructions of reconstitution.
Storage&Shipping	Store at -20°C to -80°C for 12 months in lyophilized form. After reconstitution, if not intended for use within a month, aliquot and store at -80°C (Avoid repeated freezing and thawing). Lyophilized proteins are shipped at ambient temperature.
Background	This receptor binds insulin-like growth factor with a high affinity. It has tyrosine kinase activity. The insulin-like growth factor I receptor plays a critical role in transformation events. Cleavage of the precursor generates alpha and beta subunits. It is highly overexpressed in most malignant tissues where it functions as an anti-apoptotic agent by enhancing cell survival. Alternatively spliced transcript variants encoding distinct isoforms have been found for this gene. [provided by RefSeq, May 2014]
Usage	Research use only
Conjugate	Unconjugated



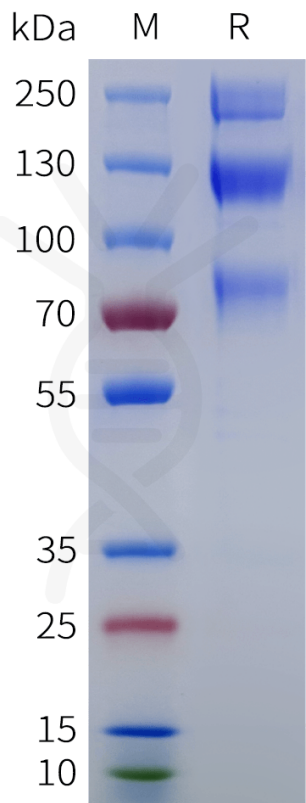
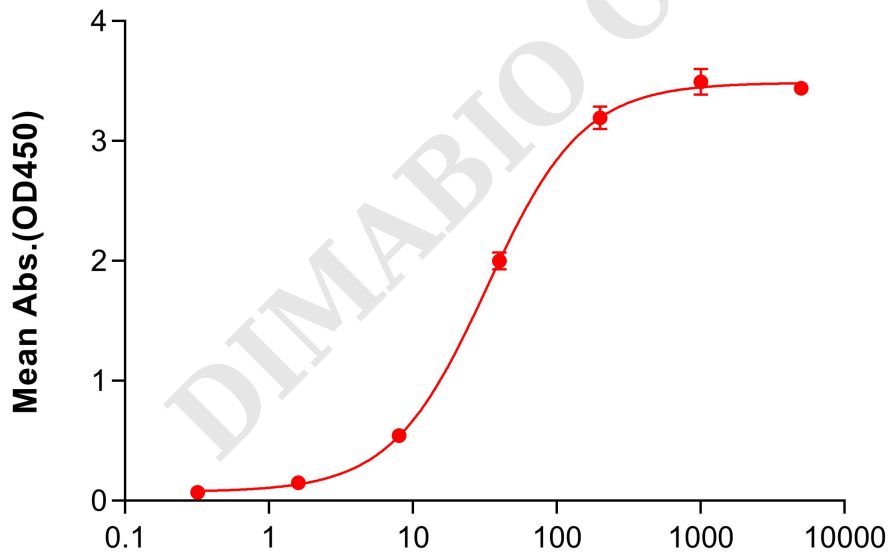


Figure 1. Human IGF-1R Protein, hFc Tag on SDS-PAGE under reducing condition.

**Human IGF-1R, hFc Tagged Protein ELISA**  
0.2  $\mu$ g of Human IGF-1R, hFc tagged protein per well



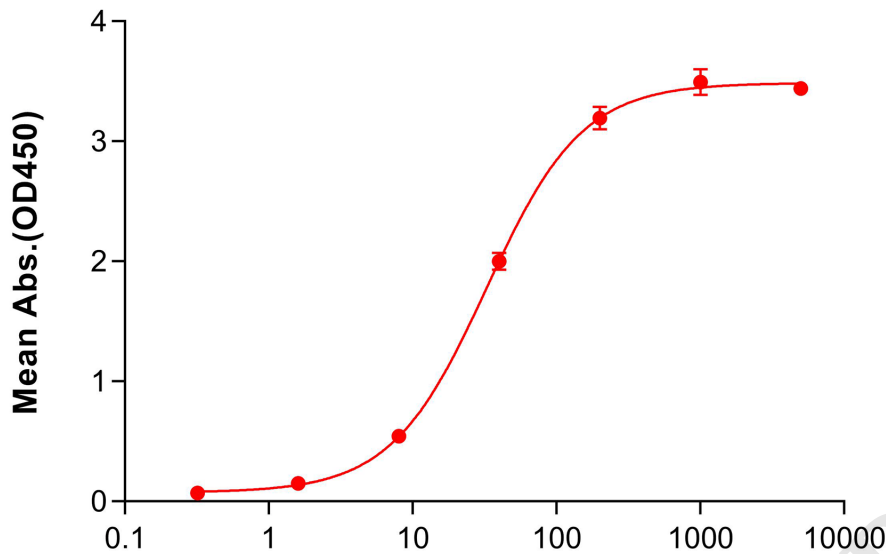
**Anti-IGF-1R antibody(DMC721), IgG1 Chimeric mAb (ng/mL)**

Figure 1. ELISA plate pre-coated by 2  $\mu$ g/mL (100  $\mu$ L/well) Human IGF-1R Protein, hFc Tag (PME101889) can bind Anti-IGF-1R antibody(DMC721), IgG1 Chimeric mAb (DMC100721) in a linear range of 8-40 ng/mL.



**Human IGF-1R, hFc Tagged Protein ELISA**

0.2 µg of Human IGF-1R, hFc tagged protein per well



**Anti-IGF-1R antibody(DMC721), IgG1 Chimeric mAb (ng/mL)**

Figure 2. ELISA plate pre-coated by 2 µg/mL (100 µL/well) Human IGF-1R Protein, hFc Tag (PME101889) can bind Anti-IGF-1R antibody(DMC721), IgG1 Chimeric mAb (DMC100721) in a linear range of 8-40 ng/mL.

