

PRODUCT INFORMATION

Target	HGF
Synonyms	SF; HGFB; HPTA; F-TCF; DFN39
Description	Recombinant human HGF(1-728) Protein with C-terminal human Fc tag
Delivery	In Stock
Uniprot ID	P14210
Expression Host	HEK293
Tag	C-Human Fc tag
Molecular Characterization	HGF(Met1-Ser728) hFc(Glu99-Ala330)
Molecular Weight	The protein has a predicted molecular mass of 109.3 kDa after removal of the signal peptide. The apparent molecular mass of HGF(1-728)-hFc is approximately 70-130 kDa due to glycosylation.
Purity	The purity of the protein is greater than 95% as determined by SDS-PAGE and Coomassie blue staining.
Formulation & Reconstitution	Lyophilized from sterile PBS, pH 7.4. Normally 5 % - 8% trehalose is added as protectants before lyophilization. Please see Certificate of Analysis for specific instructions of reconstitution.
Storage&Shipping	Store at -20°C to -80°C for 12 months in lyophilized form. After reconstitution, if not intended for use within a month, aliquot and store at -80°C (Avoid repeated freezing and thawing). Lyophilized proteins are shipped at ambient temperature.
Background	This gene encodes a protein that binds to the hepatocyte growth factor receptor to regulate cell growth, cell motility and morphogenesis in numerous cell and tissue types. Alternative splicing results in multiple transcript variants, at least one of which encodes a preproprotein that is proteolytically processed to generate alpha and beta chains, which form the mature heterodimer. This protein is secreted by mesenchymal cells and acts as a multi-functional cytokine on cells of mainly epithelial origin. This protein also plays a role in angiogenesis, tumorigenesis, and tissue regeneration. Although the encoded protein is a member of the peptidase S1 family of serine proteases, it lacks peptidase activity. Mutations in this gene are associated with nonsyndromic hearing loss. [provided by RefSeq, Nov 2015]
Usage	Research use only
Conjugate	Unconjugated



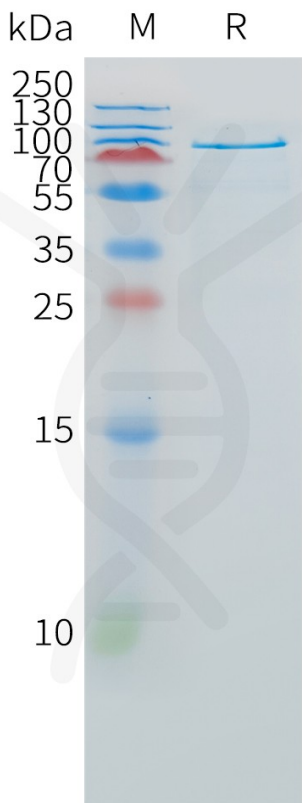


Figure 1. Human HGF(1-728) Protein, hFc Tag on SDS-PAGE under reducing condition.

**Human HGF(1-728), hFc Tagged protein ELISA**  
0.2 µg of Human HGF(1-728), hFc tagged protein per well

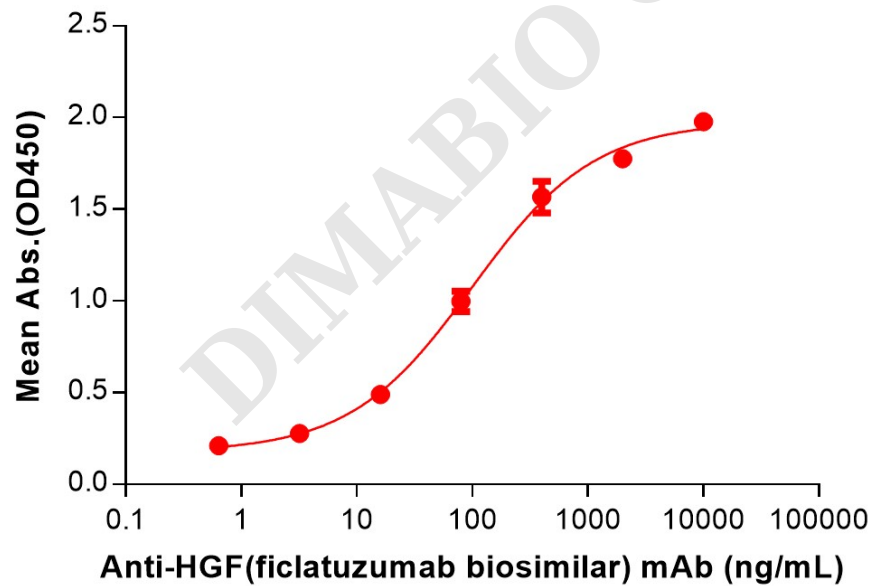


Figure 2. ELISA plate pre-coated by 2 µg/mL (100 µL/well) Human HGF(1-728) Protein, hFc Tag (PME101528) can bind Anti-HGF(ficlatuzumab biosimilar) mAb (BME100139) in a linear range of 16-2000 ng/mL.



**Human HGF(1-728), hFc Tagged protein ELISA**

0.2 µg of Human MET, His tagged protein per well

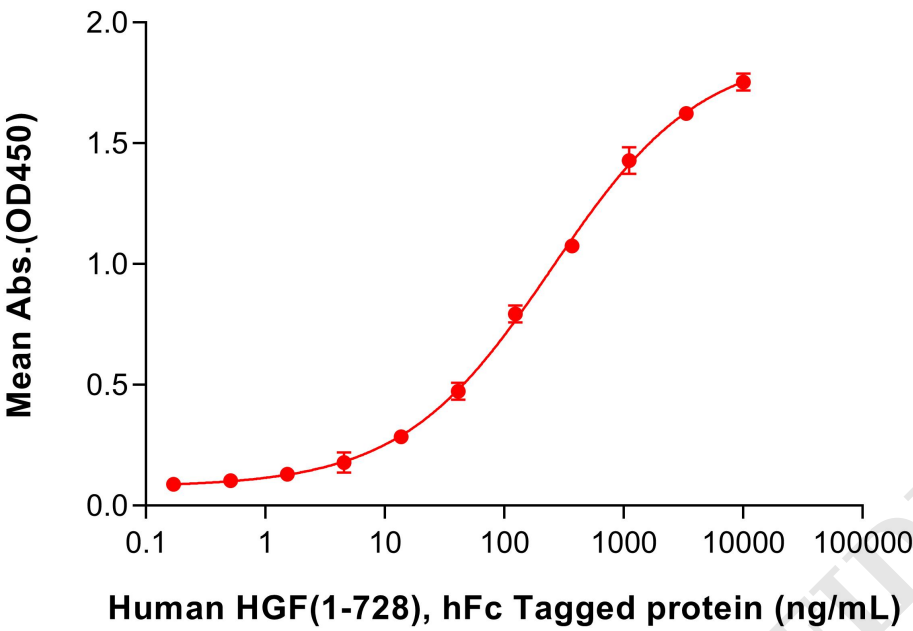


Figure 3. ELISA plate pre-coated by 2 µg/mL (100 µL/well) Human MET Protein, His (PME101405) can bind Human HGF(1-728), hFc (PME101528) in a linear range of 13.72-1111.11 ng/mL.

