

PRODUCT INFORMATION

Target	GPR15
Synonyms	GPR15, BOB, G protein-coupled receptor 15, HPT-3-2
Description	Recombinant human GPR15 Protein with C-terminal human Fc tag
Delivery	In Stock
Uniprot ID	P49685
Expression Host	HEK293
Tag	C-Human Fc tag
Molecular Characterization	GPR15(Met1-Ser33) hFc(Glu99-Ala330)
Molecular Weight	The protein has a predicted molecular mass of 30.0 kDa after removal of the signal peptide.
Purity	The purity of the protein is greater than 95% as determined by SDS-PAGE and Coomassie blue staining.
Formulation & Reconstitution	Lyophilized from sterile PBS, pH 7.4. Normally 5 % - 8% trehalose is added as protectants before lyophilization. Please see Certificate of Analysis for specific instructions of reconstitution.
Storage&Shipping	Store at -20°C to -80°C for 12 months in lyophilized form. After reconstitution, if not intended for use within a month, aliquot and store at -80°C (Avoid repeated freezing and thawing). Lyophilized proteins are shipped at ambient temperature.
Background	GPR15 (G protein-coupled receptor 15 / BOB) is a G-protein coupled receptor (GPCR) expressed in T cells, colon, and vascular endothelium. It primarily couples to Gi/o proteins, modulating cAMP levels and intracellular signaling pathways. GPR15 functions as a lymphocyte homing receptor, directing T cell migration to the colon and mucosal tissues, and is implicated in immune regulation, inflammation, and HIV/SIV entry. Dysregulation of GPR15 is associated with autoimmune and inflammatory diseases, making it a potential therapeutic target in immunology.
Usage	Research use only
Conjugate	Unconjugated



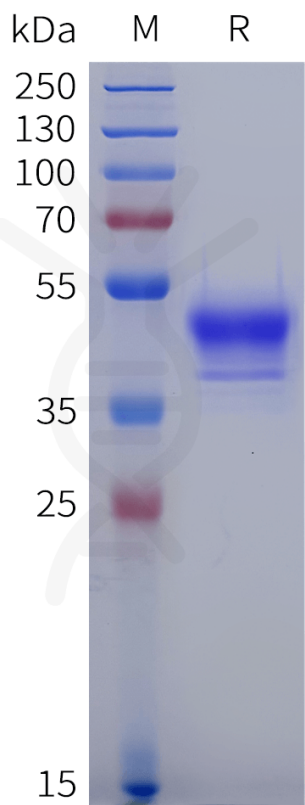


Figure 1. Human GPR15 Protein, hFc Tag on SDS-PAGE under reducing condition.

