

PRODUCT INFORMATION

Target	GPC1
Synonyms	Glypican 1;GPC1
Description	Recombinant human GPC1 protein with C-terminal 7×His tag
Delivery	In Stock
Uniprot ID	P35052
Expression Host	HEK293
Tag	C-7×His Tag
Molecular Characterization	GPC1(Asp24-Ser530) 7×His tag
Molecular Weight	The protein has a predicted molecular mass of 57.0 kDa after removal of the signal peptide. The apparent molecular mass of GPC1-His is approximately 55-70 kDa due to glycosylation.
Purity	The purity of the protein is greater than 85% as determined by SDS-PAGE and Coomassie blue staining.
Formulation & Reconstitution	Lyophilized from sterile PBS, pH 7.4. Normally 5 % - 8% trehalose is added as protectants before lyophilization. Please see Certificate of Analysis for specific instructions of reconstitution.
Storage&Shipping	Store at -20°C to -80°C for 12 months in lyophilized form. After reconstitution, if not intended for use within a month, aliquot and store at -80°C (Avoid repeated freezing and thawing). Lyophilized proteins are shipped at ambient temperature.
Background	Cell surface heparan sulfate proteoglycans are composed of a membrane-associated protein core substituted with a variable number of heparan sulfate chains. Members of the glypican-related integral membrane proteoglycan family (GRIPs) contain a core protein anchored to the cytoplasmic membrane via a glycosyl phosphatidylinositol linkage. These proteins may play a role in the control of cell division and growth regulation. [provided by RefSeq, Jul 2008]
Usage	Research use only
Conjugate	Unconjugated



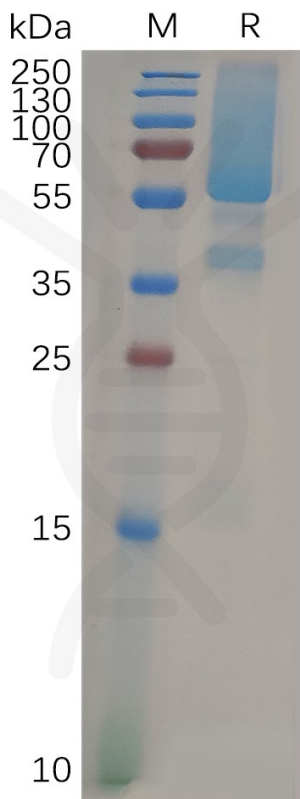


Figure 1. Human GPC1 Protein, His Tag on SDS-PAGE under reducing condition.

