

PRODUCT INFORMATION

|                                 |   |
|---------------------------------|---|
| Target                          | FLT1  |
| Synonyms                        | VEGFR-1;Tyrosine-protein kinase<br>FRT;FLT-1;FLT;Vascular permeability factor<br>receptor   |
| Description                     | Recombinant human FLT1 protein with C-terminal<br>6×His tag   |
| Delivery                        | In Stock  |
| Uniprot ID                      | P17948  |
| Expression Host                 | HEK293  |
| Tag                             | C-6×His Tag   |
| Molecular<br>Characterization   | FLT1(Ser27-Asn756) 6×His tag  |
| Molecular Weight                | The protein has a predicted molecular mass of<br>83.0 kDa after removal of the signal peptide. The<br>apparent molecular mass of FLT1-His is<br>approximately 100-130 kDa due to glycosylation.   |
| Purity                          | The purity of the protein is greater than 85% as<br>determined by SDS-PAGE and Coomassie blue<br>staining.  |
| Formulation &<br>Reconstitution | Lyophilized from sterile PBS, pH 7.4. Normally 5 %<br>- 8% trehalose is added as protectants before<br>lyophilization. Please see Certificate of Analysis<br>for specific instructions of reconstitution.   |
| Storage & Shipping              | Store at -20°C to -80°C for 12 months in<br>lyophilized form. After reconstitution, if not<br>intended for use within a month, aliquot and store<br>at -80°C (Avoid repeated freezing and thawing).<br>Lyophilized proteins are shipped at ambient<br>temperature.  |
| Background                      | This gene encodes a member of the vascular<br>endothelial growth factor receptor (VEGFR)<br>family. VEGFR family members are receptor<br>tyrosine kinases (RTKs) which contain an<br>extracellular ligand-binding region with seven<br>immunoglobulin (Ig)-like domains, a<br>transmembrane segment, and a tyrosine kinase<br>(TK) domain within the cytoplasmic domain. This<br>protein binds to VEGFR-A, VEGFR-B and placental<br>growth factor and plays an important role in<br>angiogenesis and vasculogenesis. Expression of<br>this receptor is found in vascular endothelial cells,<br>placental trophoblast cells and peripheral blood<br>monocytes. Multiple transcript variants encoding<br>different isoforms have been found for this gene.<br>Isoforms include a full-length transmembrane<br>receptor isoform and shortened, soluble isoforms.<br>The soluble isoforms are associated with the<br>onset of pre-eclampsia.[provided by RefSeq, May<br>2009] |
| Usage                           | Research use only   |
| Conjugate                       | Unconjugated  |



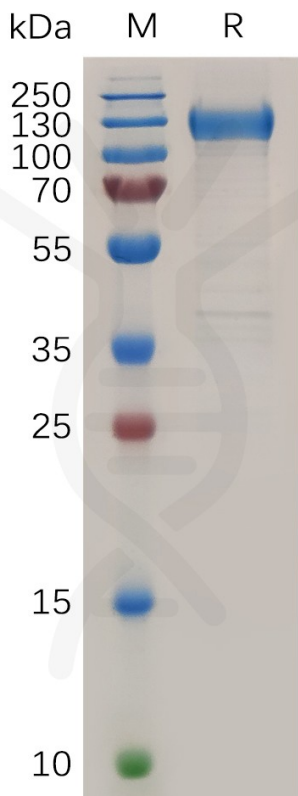


Figure 1. Human FLT1 Protein, His Tag on SDS-PAGE under reducing condition.

**Human FLT1, His Tagged protein ELISA**  
0.2 µg of Human FLT1, His tagged protein per well

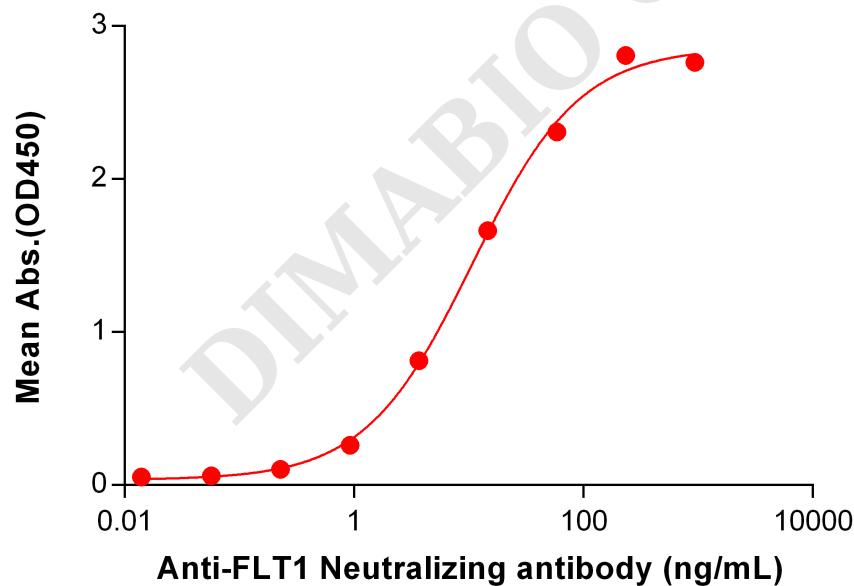


Figure 2. ELISA plate pre-coated by 2 µg/mL (100 µL/well) Human FLT1 Protein, His Tag (PME100726) can bind Anti-FLT1 Neutralizing antibody BME100131 in a linear range of 0.92-234.38 ng/mL.

