

PRODUCT INFORMATION

| | |
|------------------------------|---|
| Target | FCRL1 |
| Synonyms | FCRH1; IFGP1; IRTA5; CD307a |
| Description | Recombinant human FCRL1 Protein with C-terminal human Fc tag |
| Delivery | In Stock |
| Uniprot ID | Q96LA6 |
| Expression Host | HEK293 |
| Tag | C-Human Fc tag |
| Molecular Characterization | FCRL1(Ala17-Asn303) hFc(Glu99-Ala330) |
| Molecular Weight | The protein has a predicted molecular mass of 57.3 kDa after removal of the signal peptide. The apparent molecular mass of FCRL1-hFc is approximately 55-70 kDa due to glycosylation. |
| Purity | The purity of the protein is greater than 95% as determined by SDS-PAGE and Coomassie blue staining. |
| Formulation & Reconstitution | Lyophilized from sterile PBS, pH 7.4. Normally 5 % - 8% trehalose is added as protectants before lyophilization. Please see Certificate of Analysis for specific instructions of reconstitution. |
| Storage&Shipping | Store at -20°C to -80°C for 12 months in lyophilized form. After reconstitution, if not intended for use within a month, aliquot and store at -80°C (Avoid repeated freezing and thawing). Lyophilized proteins are shipped at ambient temperature. |
| Background | This gene encodes a member of the immunoglobulin receptor superfamily and is one of several Fc receptor-like glycoproteins clustered on the long arm of chromosome 1. The encoded protein contains three extracellular C2-like immunoglobulin domains, a transmembrane domain and a cytoplasmic domain with two immunoreceptor-tyrosine activation motifs. This protein may play a role in the regulation of cancer cell growth. Alternative splicing results in multiple transcript variants. [provided by RefSeq, Apr 2009] |
| Usage | Research use only |
| Conjugate | Unconjugated |



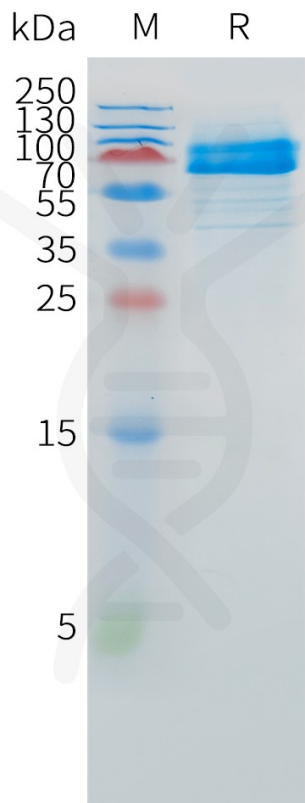


Figure 1. Human FCRL1 Protein, hFc Tag on SDS-PAGE under reducing condition.

