

PRODUCT INFORMATION

Target	EPHA3
Synonyms	TYRO4;HEK4;ETK1;ETK;EK4;HEK
Description	Recombinant human EPHA3 protein with C-terminal mouse Fc and 6×His tag
Delivery	In Stock
Uniprot ID	P29320
Expression Host	HEK293
Tag	C-Mouse Fc and 6×His Tag
Molecular Characterization	EPHA3(Glu21-Gln541) mFc(Pro99-Lys330) 6×His tag
Molecular Weight	The protein has a predicted molecular mass of 85.9 kDa after removal of the signal peptide.
Purity	The purity of the protein is greater than 95% as determined by SDS-PAGE and Coomassie blue staining.
Formulation & Reconstitution	Lyophilized from sterile PBS, pH 7.4. Normally 5 % - 8% trehalose is added as protectants before lyophilization. Please see Certificate of Analysis for specific instructions of reconstitution.
Storage&Shipping	Store at -20°C to -80°C for 12 months in lyophilized form. After reconstitution, if not intended for use within a month, aliquot and store at -80°C (Avoid repeated freezing and thawing). Lyophilized proteins are shipped at ambient temperature.
Background	This gene belongs to the ephrin receptor subfamily of the protein-tyrosine kinase family. EPH and EPH-related receptors have been implicated in mediating developmental events, particularly in the nervous system. Receptors in the EPH subfamily typically have a single kinase domain and an extracellular region containing a Cys-rich domain and 2 fibronectin type III repeats. The ephrin receptors are divided into 2 groups based on the similarity of their extracellular domain sequences and their affinities for binding ephrin-A and ephrin-B ligands. This gene encodes a protein that binds ephrin-A ligands. Two alternatively spliced transcript variants have been described for this gene.
Usage	Research use only
Conjugate	Unconjugated



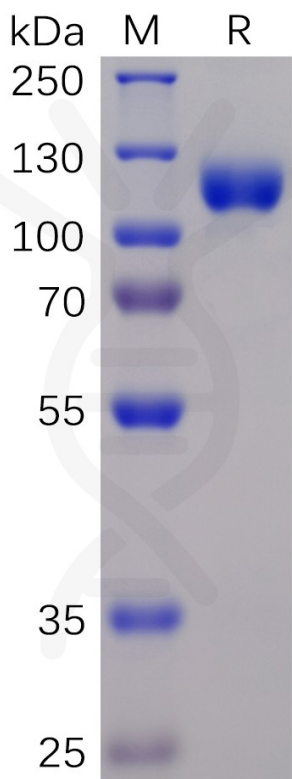


Figure 1. Human EPHA3 Protein, mFc-His Tag on SDS-PAGE under reducing condition.

Human EPHA3, mFc-His Tagged protein ELISA
0.2 µg of EPHA3, mFc-His Tagged protein per well

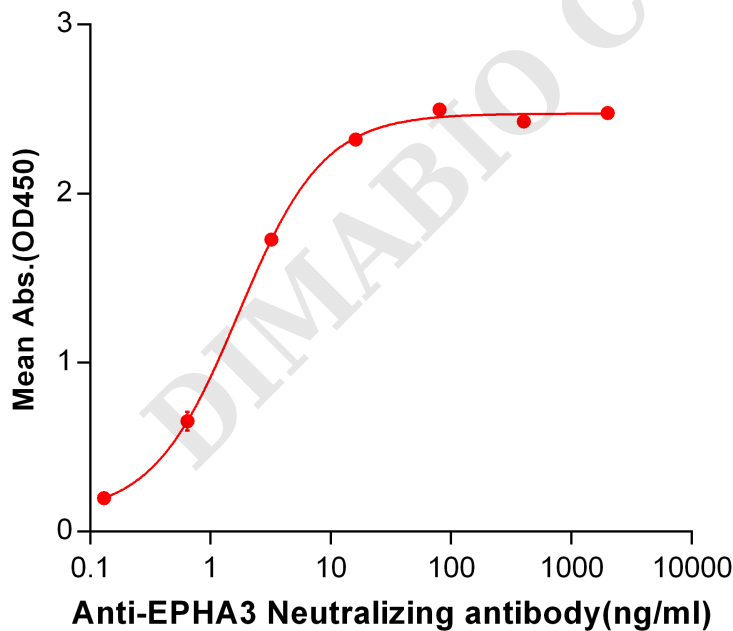


Figure 2. ELISA plate pre-coated by 2 µg/ml (100 µl/well) Human EPHA3, mFc-His tagged protein (PME100045) can bind Anti-EPHA3 Neutralizing antibody BME100019 in a linear range of 0.13-16.0 ng/ml.

