

PRODUCT INFORMATION

Target	DRD1
Synonyms	DRD1, D1R, D1A, Dopamine receptor D1A, Dopamine receptor, type 1, DRD1A
Description	Recombinant human DRD1 Protein with C-terminal human Fc tag
Delivery	In Stock
Uniprot ID	P21728
Expression Host	HEK293
Tag	C-Human Fc tag
Molecular Characterization	DRD1(Met1-Arg23) hFc(Glu99-Ala330)
Molecular Weight	The protein has a predicted molecular mass of 28.7 kDa after removal of the signal peptide.
Purity	The purity of the protein is greater than 95% as determined by SDS-PAGE and Coomassie blue staining.
Formulation & Reconstitution	Lyophilized from sterile PBS, pH 7.4. Normally 5 % - 8% trehalose is added as protectants before lyophilization. Please see Certificate of Analysis for specific instructions of reconstitution.
Storage&Shipping	Store at -20°C to -80°C for 12 months in lyophilized form. After reconstitution, if not intended for use within a month, aliquot and store at -80°C (Avoid repeated freezing and thawing). Lyophilized proteins are shipped at ambient temperature.
Background	DRD1 (Dopamine receptor D1) is a G-protein coupled receptor (GPCR) that primarily couples to Gs proteins, activating adenylyl cyclase and increasing cAMP levels. It is highly expressed in the central nervous system, especially in the striatum and cortex, where it regulates motor control, cognition, reward, and learning. Dysregulation is linked to neurological and psychiatric disorders.
Usage	Research use only
Conjugate	Unconjugated



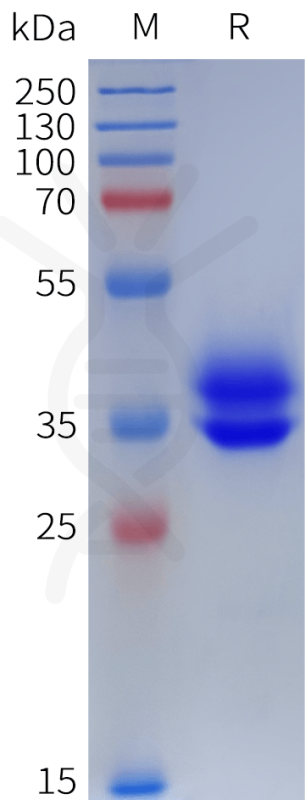


Figure 1. Human DRD1 Protein, hFc Tag on SDS-PAGE under reducing condition.

