

PRODUCT INFORMATION

| | |
|------------------------------|---|
| Target | CXCL9 |
| Synonyms | CMK;crg-10;Humig;MIG;SCYB9 |
| Description | Recombinant Human CXCL9 Protein with N-terminal human Fc tag |
| Delivery | In Stock |
| Uniprot ID | Q07325 |
| Expression Host | HEK293 |
| Tag | N-Human Fc Tag |
| Molecular Characterization | hFc(Glu99-Ala330) CXCL9(Thr23-Thr125) |
| Molecular Weight | The protein has a predicted molecular mass of 37.9 kDa after removal of the signal peptide. The apparent molecular mass of hFc-CXCL9 is approximately 35-55 kDa due to glycosylation. |
| Purity | The purity of the protein is greater than 95% as determined by SDS-PAGE and Coomassie blue staining. |
| Formulation & Reconstitution | Lyophilized from sterile PBS, pH 7.4. Normally 5 % - 8% trehalose is added as protectants before lyophilization. Please see Certificate of Analysis for specific instructions of reconstitution. |
| Storage&Shipping | Store at -20°C to -80°C for 12 months in lyophilized form. After reconstitution, if not intended for use within a month, aliquot and store at -80°C (Avoid repeated freezing and thawing). Lyophilized proteins are shipped at ambient temperature. |
| Background | This antimicrobial gene is part of a chemokine superfamily that encodes secreted proteins involved in immunoregulatory and inflammatory processes. The protein encoded is thought to be involved in T cell trafficking. The encoded protein binds to C-X-C motif chemokine 3 and is a chemoattractant for lymphocytes but not for neutrophils. [provided by RefSeq, Aug 2020] |
| Usage | Research use only |
| Conjugate | Unconjugated |



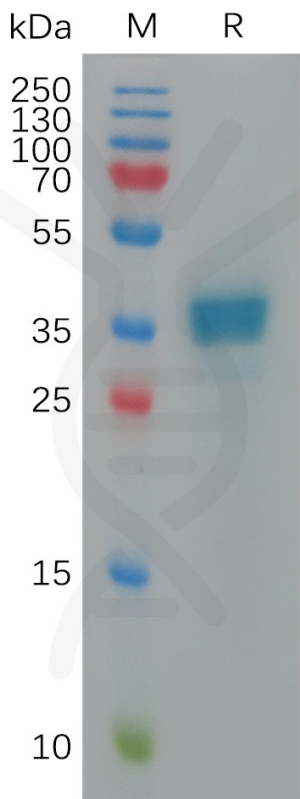


Figure 1. Human CXCL9 Protein, hFc Tag on SDS-PAGE under reducing condition.

Human CXCL9 Protein, hFc Tagged protein ELISA
0.2 µg of Human CXCR3, mFc tagged protein per well

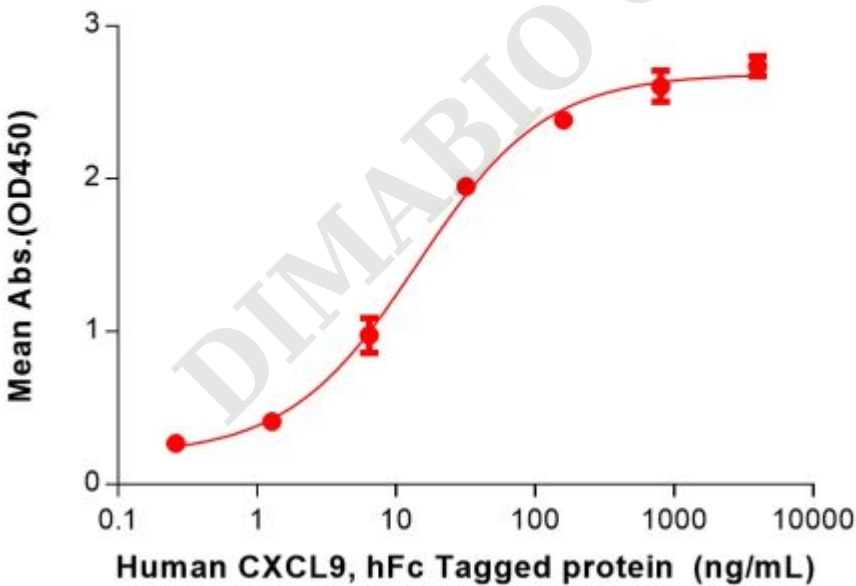


Figure 2. ELISA plate pre-coated by 2 µg/mL (100 µL/well) Human CXCR3 Protein, mFc Tag (PME100799) can bind Human CXCL9 Protein, hFc Tag (PME100936) in a linear range of 1.28-32 ng/mL.

