

PRODUCT INFORMATION

Target	CRLF2
Synonyms	CRL2;TSLPR;CRLF2Y
Description	Recombinant Human CRLF2 Protein with C-terminal 6XHis tag
Delivery	In Stock
Uniprot ID	Q9HC73
Expression Host	HEK293
Tag	C-6×His Tag
Molecular Characterization	CRLF2(Gln23-Lys231) 6×His tag
Molecular Weight	The protein has a predicted molecular mass of 25.0 kDa after removal of the signal peptide. The apparent molecular mass of CRLF2-His is approximately 25-55 kDa due to glycosylation.
Purity	The purity of the protein is greater than 85% as determined by SDS-PAGE and Coomassie blue staining.
Formulation & Reconstitution	Lyophilized from sterile PBS, pH 7.4. Normally 5 % - 8% trehalose is added as protectants before lyophilization. Please see Certificate of Analysis for specific instructions of reconstitution.
Storage&Shipping	Store at -20°C to -80°C for 12 months in lyophilized form. After reconstitution, if not intended for use within a month, aliquot and store at -80°C (Avoid repeated freezing and thawing). Lyophilized proteins are shipped at ambient temperature.
Background	This gene encodes a member of the type I cytokine receptor family. The encoded protein is a receptor for thymic stromal lymphopoietin (TSLP). Together with the interleukin 7 receptor (IL7R), the encoded protein and TSLP activate STAT3, STAT5, and JAK2 pathways, which control processes such as cell proliferation and development of the hematopoietic system. Rearrangement of this gene with immunoglobulin heavy chain gene (IGH) on chromosome 14, or with P2Y purinoceptor 8 gene (P2RY8) on the same X or Y chromosomes is associated with B-progenitor acute lymphoblastic leukemia (ALL) and Down syndrome ALL. Alternatively spliced transcript variants have been found for this gene. [provided by RefSeq, Sep 2014]
Usage	Research use only
Conjugate	Unconjugated



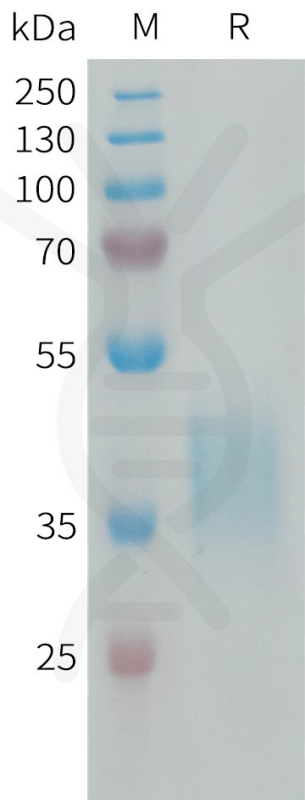


Figure 1. Human CRLF2 Protein, His Tag on SDS-PAGE under reducing condition.

Human CRLF2, His Tagged protein ELISA
0.2 µg of Human CRLF2, His tagged protein per well

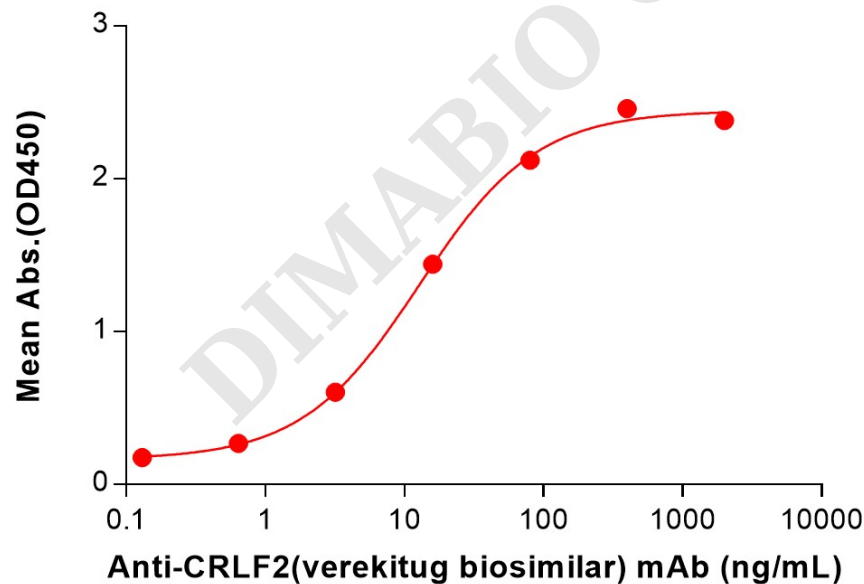


Figure 2. ELISA plate pre-coated by 2 µg/mL (100 µL/well) Human CRLF2 Protein, His Tag (PME100213) can bind Anti-CRLF2(verekitug biosimilar) mAb (BME100723) in a linear range of 3.20-400 ng/mL.

