

PRODUCT INFORMATION

Target	CRHR2
Synonyms	CRF2; CRF2R; CRH-R2; CRH-R2伪; CRH-R2尾; CRH-R2结
Description	Recombinant human CRHR2 Protein with C-terminal human Fc tag
Delivery	In Stock
Uniprot ID	Q13324
Expression Host	HEK293
Tag	C-Human Fc tag
Molecular Characterization	CRHR2(Glu20-Lys108) hFc(Glu99-Ala330)
Molecular Weight	The protein has a predicted molecular mass of 36.3 kDa after removal of the signal peptide.
Purity	The purity of the protein is greater than 95% as determined by SDS-PAGE and Coomassie blue staining.
Formulation & Reconstitution	Lyophilized from sterile PBS, pH 7.4. Normally 5 % - 8% trehalose is added as protectants before lyophilization. Please see Certificate of Analysis for specific instructions of reconstitution.
Storage&Shipping	Store at -20°C to -80°C for 12 months in lyophilized form. After reconstitution, if not intended for use within a month, aliquot and store at -80°C (Avoid repeated freezing and thawing). Lyophilized proteins are shipped at ambient temperature.
Background	CRHR2 (Corticotropin-releasing hormone receptor 2) is a G-protein coupled receptor (GPCR) that binds CRH and urocortins, activating Gs proteins and cAMP signaling. Expressed in heart, brain, skeletal muscle, and peripheral tissues, CRHR2 regulates stress response, anxiety, appetite, and energy homeostasis, and is implicated in psychiatric and cardiovascular disorders.
Usage	Research use only
Conjugate	Unconjugated



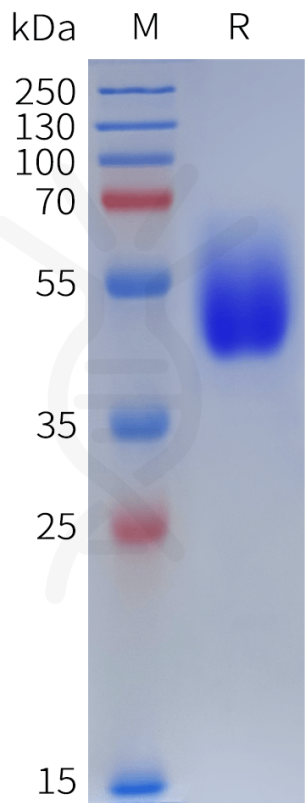


Figure 1. Human CRHR2 Protein, hFc Tag on SDS-PAGE under reducing condition.

