

PRODUCT INFORMATION

|                              |  |
|------------------------------|--|
| Target                       | CLEC5A   |
| Synonyms                     | CLECSF5;MDL-1;MDL1   |
| Description                  | Recombinant Human CLEC5A Protein with N-terminal human Fc tag  |
| Delivery                     | In Stock   |
| Uniprot ID                   | Q9NY25   |
| Expression Host              | HEK293   |
| Tag                          | N-Human Fc Tag   |
| Molecular Characterization   | hFc(Glu99-Ala330) CLEC5A(Pro28-Lys188)   |
| Molecular Weight             | The protein has a predicted molecular mass of 44.5 kDa after removal of the signal peptide. The apparent molecular mass of hFc-CLEC5A is approximately 55-70 kDa due to glycosylation.   |
| Purity                       | The purity of the protein is greater than 95% as determined by SDS-PAGE and Coomassie blue staining.   |
| Formulation & Reconstitution | Lyophilized from sterile PBS, pH 7.4. Normally 5 % - 8% trehalose is added as protectants before lyophilization. Please see Certificate of Analysis for specific instructions of reconstitution.   |
| Storage&Shipping             | Store at -20°C to -80°C for 12 months in lyophilized form. After reconstitution, if not intended for use within a month, aliquot and store at -80°C (Avoid repeated freezing and thawing). Lyophilized proteins are shipped at ambient temperature.  |
| Background                   | This gene encodes a member of the C-type lectin/C-type lectin-like domain (CTL/CTLD) superfamily. Members of this family share a common protein fold and have diverse functions, such as cell adhesion, cell-cell signalling, glycoprotein turnover, and roles in inflammation and immune response. The encoded type II transmembrane protein interacts with dnax-activation protein 12 and may play a role in cell activation. Alternative splice variants have been described but their full-length sequence has not been determined. [provided by RefSeq, Jul 2008] |
| Usage                        | Research use only  |
| Conjugate                    | Unconjugated   |



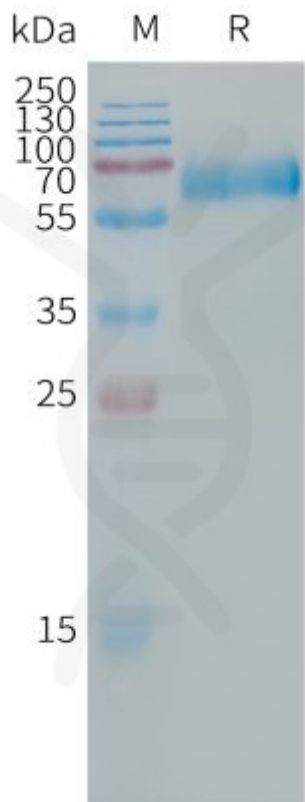


Figure 1.Human CLEC5A Protein, hFc Tag on SDS-PAGE under reducing condition.

