

PRODUCT INFORMATION

Target	CLEC2D
Synonyms	C-type lectin domain family 2 member D;Lectin-like NK cell receptor;LLT-1;Osteoclast inhibitory lectin
Description	Recombinant human CLEC2D protein with C-terminal 6×His tag
Delivery	In Stock
Uniprot ID	Q9UHP7
Expression Host	HEK293
Tag	C-6×His Tag
Molecular Characterization	CLEC2D(Arg60-Val191) 6×His tag
Molecular Weight	The protein has a predicted molecular mass of 16.2 kDa after removal of the signal peptide. The apparent molecular mass of CLEC2D-His is approximately 15-25 kDa due to glycosylation.
Purity	The purity of the protein is greater than 85% as determined by SDS-PAGE and Coomassie blue staining.
Formulation & Reconstitution	Lyophilized from sterile PBS, pH 7.4. Normally 5 % - 8% trehalose is added as protectants before lyophilization. Please see Certificate of Analysis for specific instructions of reconstitution.
Storage&Shipping	Store at -20°C to -80°C for 12 months in lyophilized form. After reconstitution, if not intended for use within a month, aliquot and store at -80°C (Avoid repeated freezing and thawing). Lyophilized proteins are shipped at ambient temperature.
Background	This gene encodes a member of the natural killer cell receptor C-type lectin family. The encoded protein inhibits osteoclast formation and contains a transmembrane domain near the N-terminus as well as the C-type lectin-like extracellular domain. Several alternatively spliced transcript variants have been identified for this gene. [provided by RefSeq, Oct 2010]
Usage	Research use only
Conjugate	Unconjugated



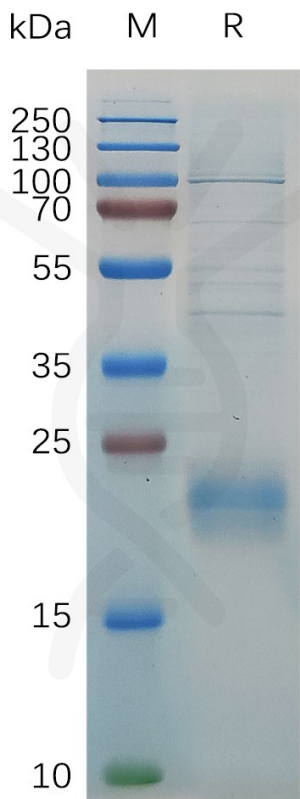


Figure 1. Human CLEC2D Protein, His Tag on SDS-PAGE under reducing condition.

