

PRODUCT INFORMATION

Target	CLDN6
Synonyms	Claudin-6;Skullin
Description	Recombinant Human CLDN6(138-160) Protein with C-terminal mouse Fc tag
Delivery	In Stock
Uniprot ID	P56747
Expression Host	HEK293
Tag	C-mouse Fc Tag
Molecular Characterization	CLDN6(Trp138-Leu160) mFc(Pro99-Lys330)
Molecular Weight	The protein has a predicted molecular mass of 29.0 kDa after removal of the signal peptide. The apparent molecular mass of CLDN6(138-160)-mFc is approximately 25-35 kDa due to glycosylation.
Purity	The purity of the protein is greater than 95% as determined by SDS-PAGE and Coomassie blue staining.
Formulation & Reconstitution	Lyophilized from sterile PBS, pH 7.4. Normally 5 % - 8% trehalose is added as protectants before lyophilization. Please see Certificate of Analysis for specific instructions of reconstitution.
Storage & Shipping	Store at -20°C to -80°C for 12 months in lyophilized form. After reconstitution, if not intended for use within a month, aliquot and store at -80°C (Avoid repeated freezing and thawing). Lyophilized proteins are shipped at ambient temperature.
Background	Tight junctions represent one mode of cell-to-cell adhesion in epithelial or endothelial cell sheets, forming continuous seals around cells and serving as a physical barrier to prevent solutes and water from passing freely through the paracellular space. These junctions are comprised of sets of continuous networking strands in the outwardly facing cytoplasmic leaflet, with complementary grooves in the inwardly facing extracytoplasmic leaflet. This gene encodes a component of tight junction strands, which is a member of the claudin family. The protein is an integral membrane protein and is one of the entry cofactors for hepatitis C virus. The gene methylation may be involved in esophageal tumorigenesis. This gene is adjacent to another family member CLDN9 on chromosome 16.[provided by RefSeq, Aug 2010]
Usage	Research use only
Conjugate	Unconjugated



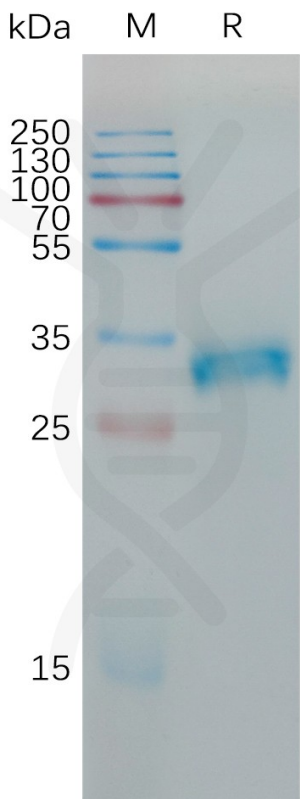


Figure 1. Human CLDN6(138-160) Protein, mFc Tag on SDS-PAGE under reducing condition.

