

PRODUCT INFORMATION

Target	CLDN18.2
Synonyms	Claudin 18.2
Description	Human Full length Claudin 18.2 Protein-VLP
Delivery	In Stock
Uniprot ID	P56856
Expression Host	HEK293
Protein Families	Transmembrane
Protein Pathways	Cell adhesion molecules (CAMs), Leukocyte transendothelial migration, Tight junction
Molecular Weight	The Human CLDN18.2 Protein has a predicted MW of 29 kDa. Due to PTM, the actual MW on SDS-PAGE gel is around 50kDa.
Formulation & Reconstitution	Lyophilized from sterile PBS, pH 7.4. Normally 5 % - 8% trehalose is added as protectants before lyophilization. Please see Certificate of Analysis for specific instructions of reconstitution.
Storage & Shipping	Store at -20°C to -80°C for 12 months in lyophilized form. After reconstitution, if not intended for use within a month, aliquot and store at -80°C (Avoid repeated freezing and thawing). Lyophilized proteins are shipped at ambient temperature.
Background	The protein encodes a member of the claudin family. Claudins are integral membrane proteins and components of tight junction strands. Tight junction strands serve as a physical barrier to prevent solutes and water from passing freely through the paracellular space between epithelial or endothelial cell sheets, and also play critical roles in maintaining cell polarity and signal transductions. This gene is upregulated in patients with ulcerative colitis and highly overexpressed in infiltrating ductal adenocarcinomas. PKC/MAPK/AP-1 (protein kinase C/mitogen-activated protein kinase/activator protein-1) dependent pathway regulates the expression of this gene in gastric cells. Alternatively spliced transcript variants encoding different isoforms have been identified. [provided by RefSeq, Jun 2010]
Usage	Research use only
Conjugate	Unconjugated



## ELISA assay to evaluate CLDN18.2 VLP

0.5 $\mu$ g Human CLDN18.2 VLP per well

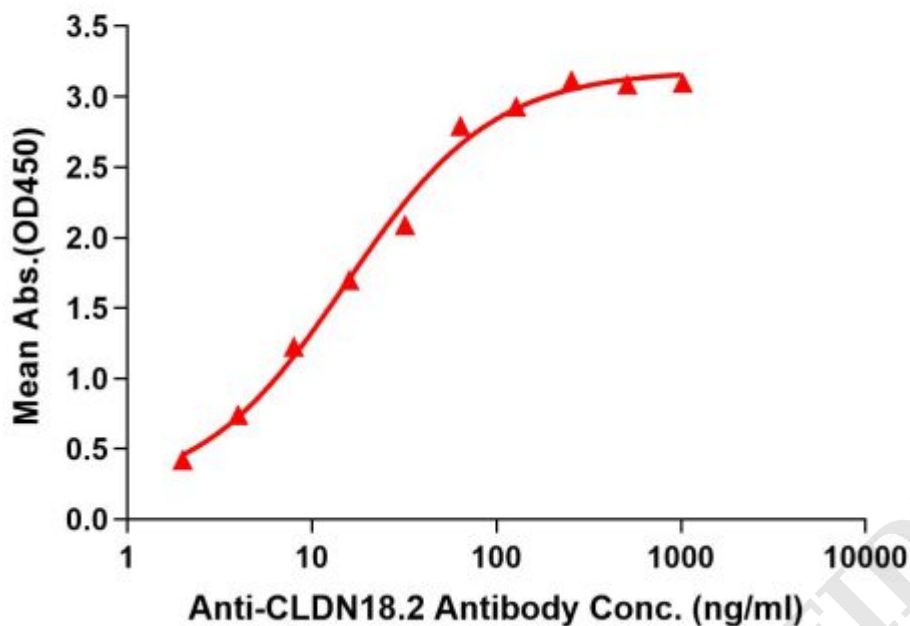


Figure1. ELISA plates were pre-coated with 0.5 $\mu$ g/per well purified human CLDN18.2 VLP. Serial diluted Anti-CLDN18.2 monoclonal antibody (Zolbetuximab biosimilar; IMAB362) solutions were added, washed, and incubated with secondary antibody before ELISA reading. From above data, the EC<sub>50</sub> for IMAB362 binding with CLDN18.2 VLP is 15.37ng/ml.

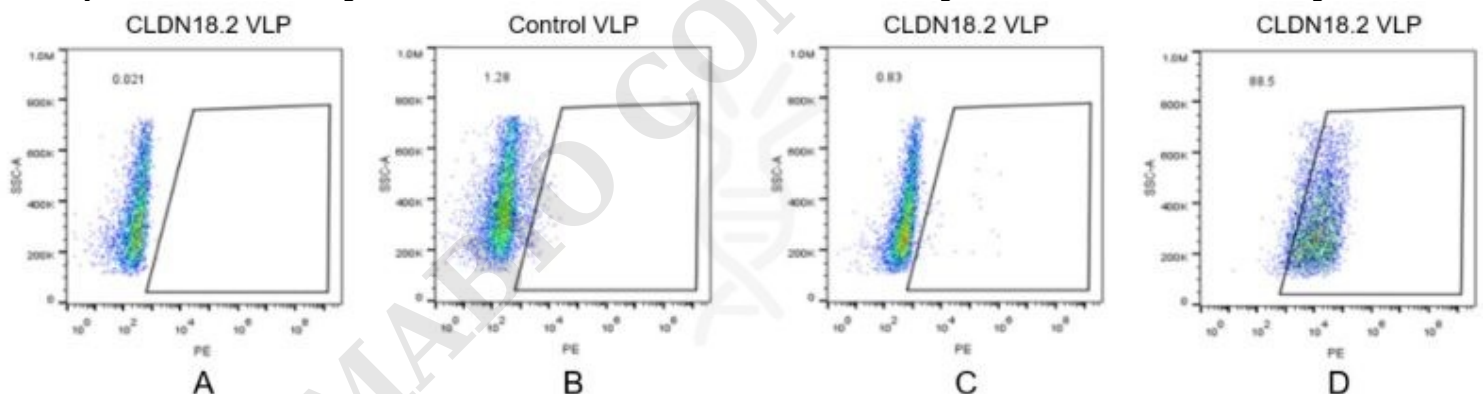


Figure2. FACS analysis of CLDN18.2 VLP

A. Negative Control 1: CLDN18.2 VLP were stained only with Goat anti-human IgG Fc-PE secondary antibody.  
 B. Negative Control 2: Control VLP were stained with anti-CLDN18.2 antibody (Zolbetuximab biosimilar; IMAB362) at 1 $\mu$ g/mL, followed by Goat anti-human IgG Fc-PE secondary antibody.  
 C. Negative Control 3: CLDN18.2 VLP were stained with anti-BCMA antibody (an irrelevant antibody) at 1 $\mu$ g/mL, followed by Goat anti-human IgG Fc-PE secondary antibody.  
 D. CLDN18.2 VLP were stained with anti-CLDN18.2 antibody (Zolbetuximab biosimilar; IMAB362) at 1 $\mu$ g/mL, followed by Goat anti-human IgG Fc-PE secondary antibody.

